

Alliances for development



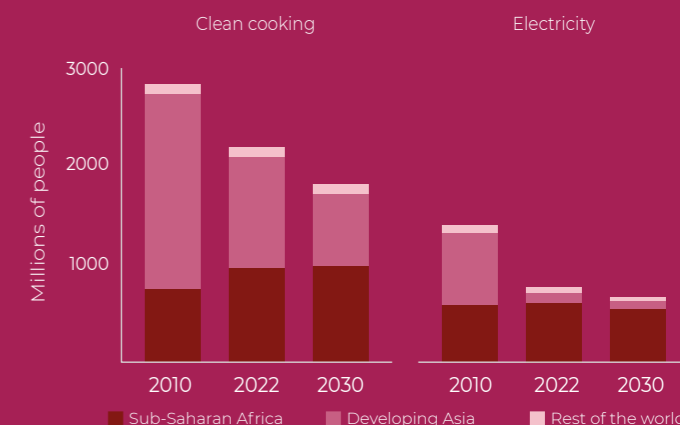
- Eni as a local development player
- Access to energy
- New businesses in the territories
- Local development projects in the world
- Partnerships for development
- Local content

REFERENCE CONTEXT: CHALLENGES AND OPPORTUNITIES

Population without access to clean cooking and electricity

In 2022, 760 million people (approximately 10% of the world's population) still did not have access to electricity, mainly in Sub-Saharan Africa and South East Asia. In spite of the past 20 years' progress, the pandemic and energy crisis reversed the trend, particularly in developing Countries where people without access to electricity are on the rise (~+2 mln in 2022 vs. 2021), especially in Sub-Saharan Africa (+11 mln). Almost 2.3 billion people today use traditional biomass (coal or kerosene) for cooking, especially in Sub-Saharan African and Asian Countries. It is estimated that the number of people without access to clean cooking will decrease by just over 15% by 2030.

Source: International Energy Agency (2022), World Energy Outlook 2023, IEA, Paris.



SDG trends for water and education

84 mln children and young people do not have access to schooling

300 mln students lack basic skills in mathematics and literacy

2.2 bln people still lack safely managed drinking water in 2022

3.5 bln people lack safely managed sanitation

COVID-19 had considerable impacts on the advancement of education, causing learning losses in over 80% of the 104 Countries analysed. The world lags behind achieving the goal of quality education for all and without additional measures, by 2030 only 1 in 6 Countries will reach the goal of universal secondary school completion.

To achieve the universal target by 2030 requires a substantial increase in current global rates of progress: 6 times for drinking water, 5 times for sanitation and 3 times for hygiene. Also due to conflicts and climate change, Sub-Saharan Africa is the most backward region.

Source: The Sustainable Development Goals Report 2023, United Nations publication issued by the Department of Economic and Social Affairs (DESA), © 2023 United Nations.

Gender Overview 2023

Achieving complete poverty-free status for all women by 2030 requires simultaneous action on persistent gender inequalities, including access to land, health care and family planning, education and employment.

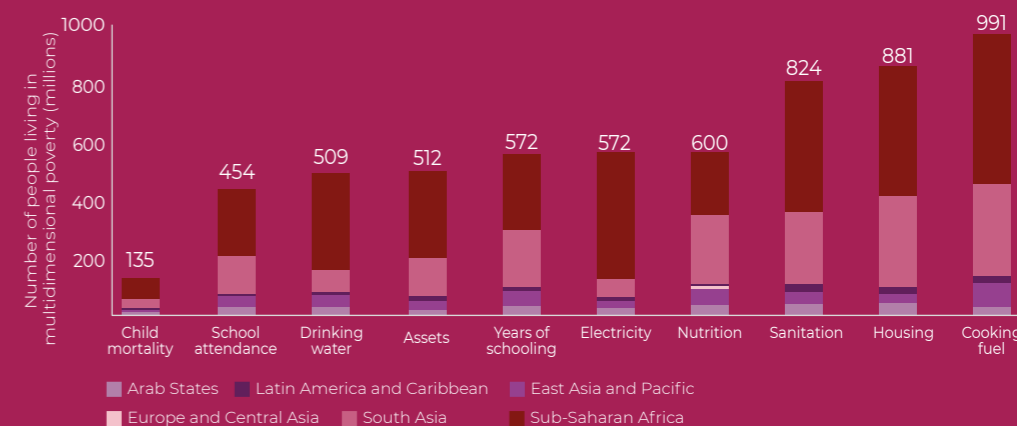
340 mln women and girls will still be living in extreme poverty in 2030

54% of Countries still do not have laws that address the main areas of gender equality, including equal rights in marriage and divorce.

Source: © UN Women and United Nations Department of Economic and Social Affairs, Statistics Division 2023.

Poverty and deprivation by geographic area in 2023

According to the indicators that make up the Global Multidimensional Poverty Index, in 110 Countries 1.1 billion people are considered poor, of whom 824 million lack access to sanitation, 881 million to adequate housing and 991 million to cooking fuel. More than half of the poor are deprived of access to food, electricity or adequate education.



Source: 2023 by the United Nations Development Programme and Oxford Poverty and Human Development Initiative.

Eni as a local development player



Why is it important to Eni?

Investing in local communities is a direct demonstration that our energy transition path involves the territories. Access to energy, sustainable local development, respect for human rights and environmental protection are the foundations for a just and fair transition. Our local development and agroenergy projects in Mozambique are just a few examples of our strategy in action.

MARICA CALABRESE MANAGING DIRECTOR AT ENI ROVUMA BASIN, MOZAMBIQUE

For more information

POLICY/POSITIONING/OTHER DOCUMENTS

- Eni's Code of Ethics; ► Respect for Human Rights in Eni; ► Alaska Indigenous Peoples; ► Eni for 2023 - Sustainability performance; ► eni.com;
- Seeds for Energy; ► Energy for development; ► Energy for Education

COMMITMENTS

2030 beneficiaries by sector: 103,000 access to education; 15.9M access to clean cooking; 86,000 access to electricity; 21,000 economic development; 590,000 access to drinking water; 1M access to health services; 85,000 environmental and biodiversity protection activities

For Eni, sustainability is an integral part of all business activities, from the initial phase of entering a new Country to de-commissioning activities. It is essential in Eni's efforts towards Just Transition, by implementing different solutions relevant to the specificities and constraints of each Country, with separate

THE MANAGEMENT OF GRIEVANCES

Stakeholder engagement activities, supporting the relationship with indigenous peoples and other local stakeholders, are aimed at understanding their expectations, concerns and needs, to strengthen mutual understanding and trust and facilitate dialogue and collaboration. Eni promotes continuous and transparent forms of consultation to inform local communities and relevant stakeholders, through to the adoption of the business application Stakeholder Management System (SMS) that maps and monitors the relationship with stakeholders, the progress of the projects, the achieved results and traces the **GRIEVANCE** received, the claims or complaints re-

approaches for Countries with advanced economies and Countries with emerging economies. In addressing transition, Eni focuses on a business model based on the diversification of energy sources and their supply, aiming at contributing to energy access in Countries, through industrial and local development projects, also

lated to accidents or damages or other environmental or social impacts, real or perceived, determined by the activities of Eni or its contractor or supplier, ensuring a constant and timely management. Eni has defined and applied the guiding principles for managing the "Grievance Mechanism", whose operational responsibility lays in the hands of all subsidiaries and Districts, on the operational level, that analyse and agree upon the solution with claimants (whether individuals or communities) through dedicated consultations with local communities, especially indigenous peoples and vulnerable groups, in cases where the context and/or past projects suggest a high number of **GRIEVANCE**, or where the projects or activities involve economic or physical

in partnership. Over time, Eni has developed a systemic approach to defining priority areas of intervention, implementing 'tailor-made' projects based on the needs of local populations, while contributing to the SDGs and the achievement of the sustainability goals included in the Four-Year Strategic Plan.

relocation of communities. **GRIEVANCE** are monitored at subsidiary and central levels from the reception to the resolution and enables to classify them by theme and relevance, verifying the percentage of 'resolved' ones, on the total of received in a given period, namely when the parties have agreed on a proposal. The SMS system allows monitoring any relevant stakeholders' critical issues over time and adjusting the engagement strategy accordingly. Other areas of investigation concern the timeliness of management of **GRIEVANCE** and the trend analysis to identify any recurrences and their possible evolution towards a dispute. Feedback can be requested from the claimants on their level of satisfaction in relation to the functioning of

the process, asking them to point out any areas for improvement. Eni requires its suppliers, contractors and sub-contractors to provide its own Grievance Mechanism to workers and communities with whom they interact on behalf of Eni. As of 2023, Eni is extending the "Grievance Mechanism" application to new businesses (e.g. agri feedstock), in line with the transition path undertaken.

► Eni for 2023 - Sustainability performance

GRIEVANCES FILED



ENI'S LOCAL APPROACH



1

KNOWLEDGE OF THE CONTEXT IN ORDER TO:

Accompany the various phases of business planning ensuring greater efficiency and a systematic approach to the decision-making. Highlight and understand the needs of the local communities, in relation to the presence maturity level in the Country, deepening various issues also through specific indices such as MPI to analyse the poverty level. In 2023, analyses were conducted on Timor Leste, Mozambique, and Egypt. Plan the strategy for implementing development projects best suited to the long-term needs of local populations. Understand and analyse the most vulnerable groups (women, children, migrants, etc.).

2

DEVELOP RELATIONSHIPS WITH LOCAL STAKEHOLDERS IN ORDER TO:

Support the understanding of context, involving indigenous peoples, vulnerable groups and stakeholders to consider concerns, needs and expectations (stakeholder engagement activities). Ensure the stakeholder relationship through **GRIEVANCE** management and monitoring. Define access appropriate channels and dialogue methods, manage potential conflicts and conduct dedicated consultations with local communities, especially in critical contexts (e.g. with a high number of **GRIEVANCE** or in case of economic or physical relocation of communities). Check for and provide solutions in the event of negative impact on human rights, through an ongoing Due Diligence process for all activities (**Human Rights**).

3

IMPACT ANALYSIS IN ORDER TO:

Prevent any negative impact due to the presence of activities through integrated impacts studies on the environmental, health and people including human rights (**ESHIA**). Ensure adherence of activities to international standards and involve key stakeholders in evaluations to protect their interests. Understand the impacts on areas and communities, identifying critical issues, assessing potential direct and indirect impacts and implementing possible mitigation measures. Reduce risks and exploit opportunities, redirecting investment strategies as needed. Support the definition of interventions in the area.

4

IMPLEMENTATION OF LOCAL DEVELOPMENT PROGRAMMES:

Aimed at improving the well-being and supporting human development, through activities defined according to the analysis of local needs, National Development Plans, Agenda 2030 and Nationally Determined Contributions. Developed along 5 lines of action: Human Rights in Communities, Land Management, Local Content, Stakeholder Engagement and Local Development Projects on 6 sectors for intervention. In collaboration with local, national and international parties to pool resources and human capital (**Partnership**).

5

IDENTIFICATION OF ROBUST METHODOLOGIES IN ORDER TO:

Ensure the evaluation and measurement of the generated Local Development ("learn and adapt") through methodologies and project cycle management tools and measurement of the contribution generated, in cooperation with academic institutions. Evaluate projects with **LOCAL CONTENT EVALUATION (ELCE)** to quantify the added value. Monitor progress and results achieved with the **LOGICAL FRAMEWORK APPROACH (LFA)** and results-based management approach.

Access to energy

In its transition path, Eni aims to contribute to SDG No. 7 'Ensure access to affordable, reliable, sustainable and modern energy for all' to guarantee people's basic needs (health, education and economic diversification) and to support the development of the local industry, creating new job opportunities. In this regard, Eni pursues several initiatives towards local markets, including the supply of natural gas (the fossil fuel with the lowest carbon footprint), the distribution of LPG (Liquefied Petroleum

Gas), the production of electricity from fossil and renewable sources and the distribution of improved cookstoves.

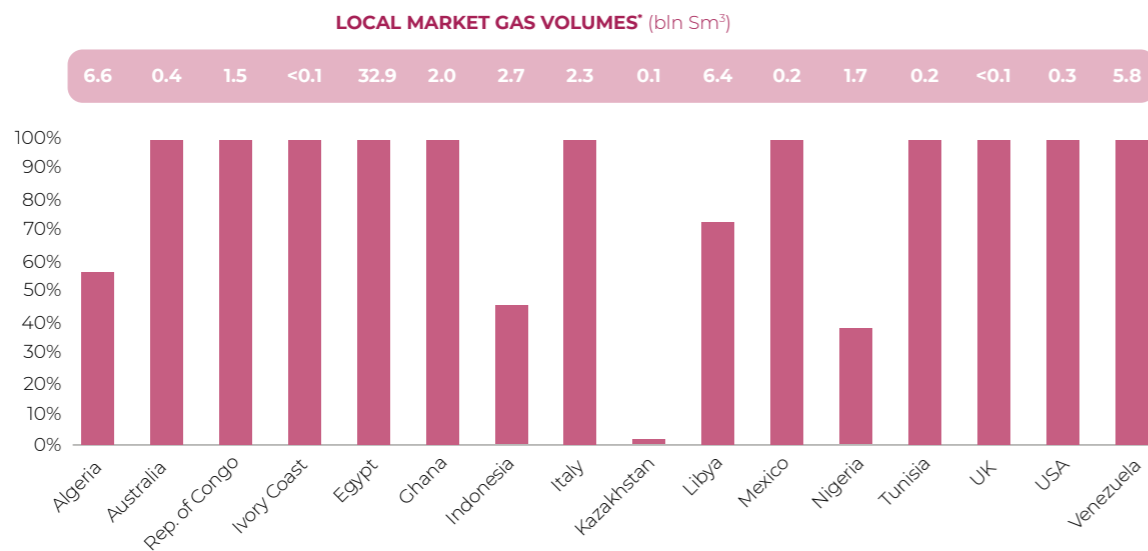
PRODUCTION AND DISTRIBUTION OF NATURAL GAS

Eni invests in the production and transportation of natural gas, part of which is delivered to the Countries where it is exploited. In 2023, Eni supplied the local markets with 63.1 billion Sm³ from its operated fields, with quantities similar to

previous years. Considering Eni's fields in the African continent, Eni maintained its gas supplies to local markets, guaranteeing 51.3 billion Sm³ (in line with the value of 2022, equal to 52.4 billion Sm³), equivalent to 80% of total production of Eni in the continent. Locally, gas is mainly used for two purposes: electricity production and direct consumption for both residential and industrial use. For host Countries, gas also represents an economic opportunity through its exploitation via export.

63.1 billion Sm³ gas sold to local markets

NATURAL GAS FOR SALE AT LOCAL MARKETS



* Gross gas volumes operated by Eni. The % refers to the quantity left in the Country compared to the total production.

THE VALUE OF NATURAL GAS IN THE ENERGY TRANSITION OF PRODUCING COUNTRIES

<h4>INCREASED ACCESS TO ELECTRICITY</h4> <p>The gas produced by Eni has contributed to an increase in electricity production, especially in many Countries in the African continent, increasing the access to electricity and the amount available for both industry and residential sectors.</p>	<h4>DECARBONIZING THE ELECTRICITY MIX</h4> <p>In some Countries, such as Egypt and Ghana, the use of gas has led to a reduction in the share of energy produced from fuel oil, which has a larger carbon footprint than gas.</p>	<h4>PREPARATION FOR THE DEVELOPMENT OF RENEWABLE SOURCES</h4> <p>The great flexibility of natural gas power plants in handling seasonal or daily peaks in electricity demand ensures stability for the electricity grid, preparing the way for the development of renewables (wind and solar), which are inherently subject to variability and intermittency and therefore cannot be planned.</p>
---	---	---

EXAMPLES OF LOCAL NATURAL GAS VALORISATION PROJECTS

CONGO - CENTRALE ÉLECTRIQUE DU CONGO (CEC)



CONTEXT: since 2010, Eni has been supplying natural gas to the Centrale Électrique du Congo (CEC), the Country's main power generation plant. This project confirms Eni commitment for gas valorisation, in line with the Zero Routine Flaring target in 2025. Electricity production in Congo increased from 0.8 TWh in 2010 (CEC start-up) to 4 TWh in 2021 (source: IEA). This development was supported by an increasing contribution from natural gas, which guaranteed 70% of electricity production in 2021. The exploitation of gas has also limited the use of fuels with a larger carbon footprint, such as fuel oil: in 2021, the share of fuel oil in the Congolese electricity mix was only the 5% of the total energy produced. The national electricity system presents indeed significant area of improvements, in terms of efficiency and extension of the transmission and distribution network.

RESULTS: CEC's electricity production in 2023 was 2.1 TWh, confirming Eni's role in the evolution of the Congolese electricity mix. The increase in electricity production supported the increase in the share of people with access to electricity from 40% (2010) to 50% (2021) of the population. In absolute terms, this is equivalent to 1.2 million people with access to electricity.

GHANA - INTEGRATED OFFSHORE CAPE THREE POINTS PROJECT



CONTEXT: in 2018 Eni achieved the start up of the OCTP offshore project, an integrated project for the deployment of oil and natural gas fields. The OCTP project will deliver natural gas to shore. This gas is used for electricity production and support the Country's growing demand for electricity. This contribution limited the import of gas from other Countries: during the last years, the Country imported an average of around 650 MSm³ of gas, equal to one-third of the volume supplied locally by the project in 2023. The availability of natural gas limited also the consumption of other fossil fuels: for example, fuel oil consumption dropped by 83% compared to 2017, shifting the electricity mix towards sources with lower carbon footprints such as hydropower and gas.

RESULTS: OCTP's gas contributed to the production of 6.6 TWh of electricity in 2023, about 30% of the nationally generated electricity. Since 2017 (the last year before the plant's start-up), total electricity generation in Ghana increased by 66% and the population with access to electricity increased by 4.4 million of people (from 79% to 86% of the population).

2023 PRIMARY RESULTS BY ENERGY CARRIER

ELECTRICITY PRODUCTION FROM GAS

Eni operates thermoelectric power plants, with the aim of increasing the quality and reliability of supply.

NIGERIA
 • Okpai power plant >2,300 GWh (2023)
 • Omoku power plant >490 GWh (2023)
7.8% of the electricity generated in Nigeria

CONGO
 CEC power plant >2,100 GWh (2023)
 Over **50%** of the electricity produced in Congo

ELECTRICITY PRODUCTION FROM RENEWABLE SOURCES

In addition to Plenitude initiatives, Eni has developed power plant fed by renewable energy to minimise CO₂ emissions from upstream projects:

- Photovoltaic installations to replace natural gas consumption (e.g. Adam PV in Tunisia and BRN PV in Algeria);
- photovoltaic installations to reduce electricity withdrawal from the national grid (e.g. Abu Rudeis PV in Egypt).

Both types of installations contribute to the reduction of Scope 1 and 2 emissions from Upstream plants.

LIQUEFIED PETROLEUM GAS

In line with SDG 7, to increase the use of clean and modern fuels, Eni distributes LPG locally for residential use.

17.7 million barrels produced in 2023 in Algeria, Egypt, Libya and Tunisia
36.4% to the residential sector

CLEAN COOKING

Eni also promotes access to modern cooking solutions, through the replacement of traditional cookstoves with improved models. This contributes to the reduction of domestic pollution, to limit the exploitation of forest resources and to the improvement of the quality of life for the communities involved.

54,982 improved cookstoves in Ivory Coast, Mozambique and Rwanda
 Beneficiaries reached: about **274,000** people

New businesses in the territories

10 Countries in which agreements finalized with authorities and local stakeholders in 2023

AGRI FEEDSTOCK INITIATIVES AND THEIR IMPACT ON THE TERRITORIES



Eni has developed a distinctive model of vertical integration for the production of vegetable oil (agri feedstock) for use in biofuel production, starting from crops grown on degraded lands and in rotation, identified according to the Renewable Energy Directive (RED) of the European Union, and from the enhancement of agricultural, industrial, and forestry residues. The extraction of vegetable oil from agri feedstock takes place in industrial plants built by Eni (Agri Hub) or using those of third parties, depending on the availability and industrial maturity of Countries. The by-products can be transformed into feed and fertilizers, which will positively contribute to the food security of the involved territories. Eni's distinctive model for agri feedstock initiatives aims to ensure vegetable oil volumes at a competitive cost, involving local farmers in the cultivation and collection of agricultural and forestry residues. These supply chains are certified according to the European sustainability scheme ISCC-EU (International Sustainability and Carbon Certification), linked to stringent environmental, social, and traceability standards. Agri feedstock initiatives also impact environmental and socio-economic aspects as they aim to promote the regeneration of agricultural lands and

contribute to local development by creating jobs, new market access and income opportunities, educating local farmers, and supporting them with the supply of first-quality seeds and agricultural inputs.

ACTIVITIES AND AGREEMENTS

In 2023, Eni finalized some agreements with authorities and local stakeholders for the start up of the first activities in 10 Countries (Kenya, Congo, Ivory Coast, Angola, Rwanda, Mozambique, Guinea Bissau, Italy, Kazakhstan, Vietnam). In Kenya, where the production of vegetable oil started in 2022 and two Agri Hubs have been built to date, the project has already involved about 80,000 farmers, covering an area of over 40,000 hectares. In Ivory Coast, the first production of vegetable oil was obtained in 2023, from agro-industrial and forestry waste, such as residues from rubber tree cultivation. Eni, through an agreement with the Ivorian federation of rubber producers (FPH-CI), offers an additional income opportunity to the 200,000 families engaged in the cultivation and collection of latex, by valorizing their seeds for the first time on an industrial scale and creating a new market. Other initiatives include Mozambique, where production started at the end of 2023, Angola, where pilot field cultivation has begun involving small farmers and local agro-industrial realities, Rwanda, where high value-added initiatives and

the sharing of know-how are underway for the production of quality seeds for Eni's agri feedstock initiatives in other African Countries, and Vietnam, where new collaborations and pilot activities for the valorization of rubber residues have been initiated. Pilot activities have also been carried out in Congo, Kazakhstan, and Italy, and evaluations have been started in other Countries, such as Guinea Bissau and those in the Far East. As part of these initiatives, Eni has started a partnership with the International Labour Organization (ILO) of the United Nations to improve occupational safety and health for the small farmers involved in the supply chains in Kenya and Ivory Coast and with the International Renewable Energy Agency (IRENA) to facilitate dialogue on the theme of energy transition and renewable energies among stakeholders in the involved African Countries. Overall, Eni's agri feedstock initiatives plan to involve over 700,000 farmers by 2027, mainly in Africa, to regenerate 1 million hectares of agricultural lands, and to contribute to food security with the production of about 1 million tonnes of feed and fertilizers. The development of the agri feedstock supply chain in Africa has also been supported by activities implemented by Joule, which has created initiatives with a significant local impact, including two examples below.

Case Study



Eni and Luiss University launch the first International Network on African Energy Transition

CONTEXT: Eni and Luiss launched the International Network on African Energy Transition (INAET), which brings together leading institutions, universities, think tanks and international scholars to promote analysis and debate on transition on the continent. Given the rapid growth of local economies in Africa, the energy transition offers enormous opportunities. INAET's ambition is to unlock this potential by exploring new avenues for collaboration between the main actors involved.

OBJECTIVE: with a strong presence in Africa, Eni is promoting an initiative to foster consolidation of the African debate on energy transition in collaboration with Luiss University. The project aims to promote an in-depth study of 5 main themes: (i) climate change mitigation and adaptation measures; (ii) Africa's development pathways and the necessary resources; (iii) the younger generation's view on the energy transition; (iv) African priorities in the energy transition; (v) the role of international players and the private sector.

ACTIVITY: in November, the launch conference was held in Rome. It brought about 20 experts from all over Africa to Italy to discuss the development of the project, the consolidation of the network during 2024 with a likely new conference in Africa later this year. Synergy is promoted with European and international universities and institutions, including the European University Institute, the International Monetary Fund, the Food and Agriculture Organisation (FAO), the International Renewable Energy Agency (IRENA), the Atlantic Council, as well as the Italian Ministry of Foreign Affairs, Cassa Depositi e Prestiti and other relevant stakeholders.

MODELS FOR THE ENERGY TRANSITION



The achievement of Carbon neutrality in 2050 in a perspective of Just Transition involves the implementation of a series of actions to make the transition socially fair. To pursue these objectives, it is necessary to make energy, services and products that are

progressively decarbonized available; to propose opportunities for reconversion for people, production chains and areas up to now involved in traditional business activities; to work with National Companies to reduce emissions and with hard-to-abate sectors to envisage transformations that preserve industrial competitiveness while decarbonizing supply chains; supporting institutions

by contributing – through positive advocacy and sharing of specialist know-how – to the definition of the regulatory framework for the transition, including, for example, incentives for the development of new technological solutions and infrastructure. Eni's central projects in the pursuit of decarbonization are the Ravenna Hub and the HyNet North West project in the Liverpool Bay area in the UK.

INNOVATION INITIATIVES FOR TERRITORIES IN THE AGRI FEEDSTOCK PRODUCTION FIELD



KENYA - CAPACITY BUILDING PROJECT "SEEDS FOR SUSTAINABLE ENERGY"

OBJECTIVES: identify innovative local solutions to support the agribusiness supply chain and create growth opportunities for local entrepreneurs.

ACTIVITY: bootcamp for the acceleration of innovative business ideas conducted with the support of BeEntrepreneurs: 3 start-ups rewarded with €10,000 in services and 2 start-ups selected by the business to launch a field trial. Through a process of analysing the economic, environmental and social benefits generated by the project, applying the Social Return on Investment (SROI) methodology, measuring the ratio between the impact generated by the project and the available budget, it was found that for every €1 invested in the initiative, the local community has a return of €1.2.

202 applications received
10 accelerated startups

CONGO - ECOSYSTEM BUILDING PROJECT

OBJECTIVES: building a strong ecosystem for co-innovation projects between Congolese startups and local entrepreneurs.

ACTIVITY: mapped and engaged local stakeholders, launched empowerment initiatives for small and large farmers with training activities on entrepreneurship and innovation with the contribution of LUISS Business School and UNIDO, and held a training and networking event 'Atelier d'entrepreneuriat'. The project will continue in 2024 with scouting and incubation of local innovative solutions, as well as specific management training for small farmer aggregators.

4 months of training and mentoring
+60 participants involved

MODELS FOR THE ENERGY TRANSITION

RAVENNA (ITALY) INDUSTRIAL HUB

OBJECTIVE: build Italy's leading Energy District, creating a unique model for transition, combining thermal and electrical energy with chemistry, from land reclamation and redevelopment to photovoltaics, from Carbon Capture and Storage (CCS) to wave energy.

ACTIVITY: the construction of a CO₂ capture and storage (CCS) hub in the depleted gas fields in the Ravenna offshore area is underway, with a potential of 500 million tonnes of storage by 2024, expected to store 25,000 tonnes of CO₂ per year.

A reduction of **23,000** ton CO₂/year
€72 mln invested from 2000-2021

HYNET NORTH WEST (UK)

OBJECTIVE: integrate emissions capture from hard-to-abate energy-intensive industries, develop lower carbon impact hydrogen and create the first CO₂ capture and storage infrastructure from onshore industries and defined, safe storage in depleted gas fields in the Irish Sea.

ACTIVITY: transformation of one of the Country's most energy-intensive manufacturing clusters (Liverpool Bay) into the world's first lower emission industrial cluster, with an annual storage potential of 4.5 million tonnes CO₂ from the second half of this decade and 10 million tonnes from 2030; planned development (second phase) of a lower emission hydrogen supply chain by integrating the existing natural gas plants with CCS activities.

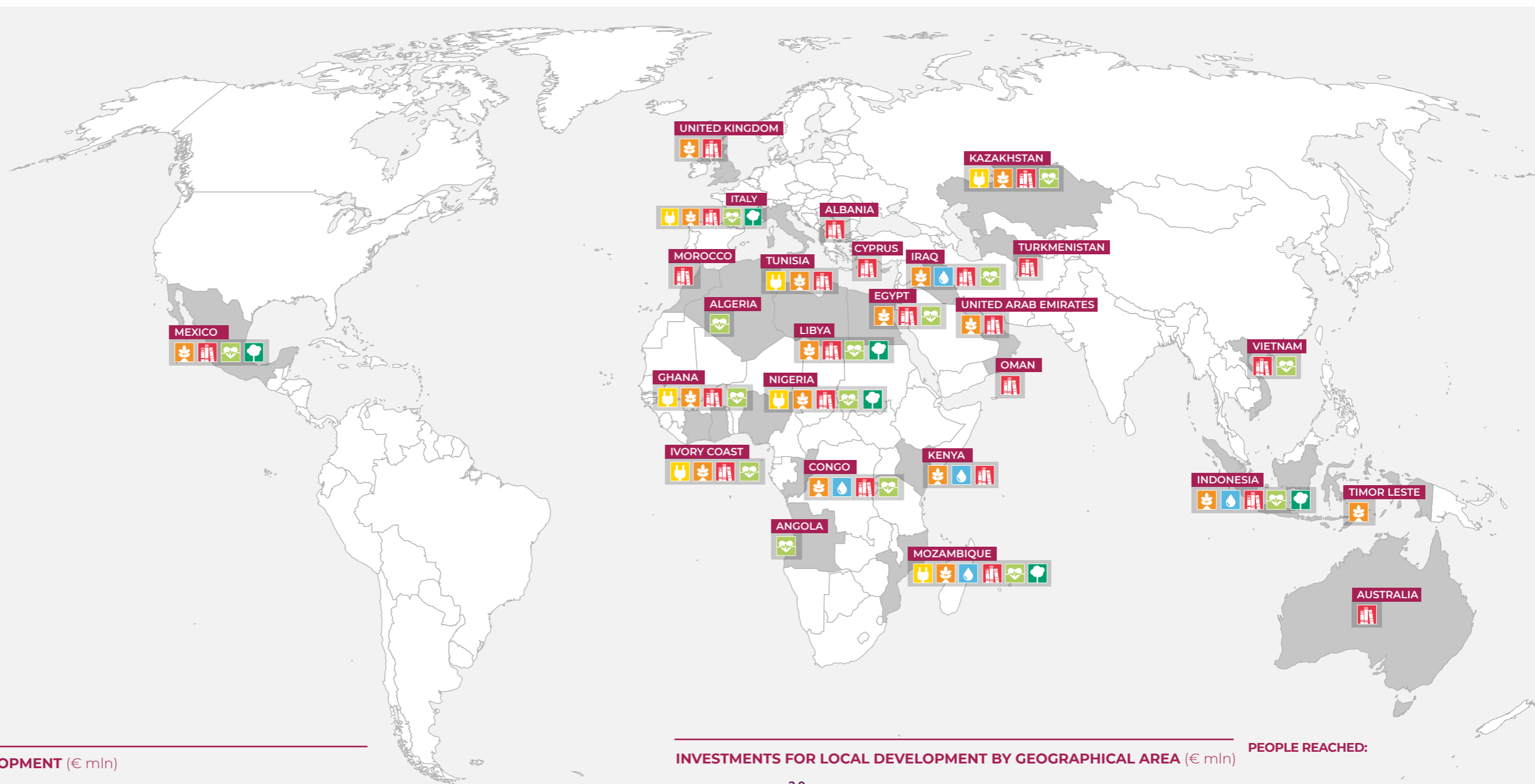
350,000 jobs preserved
£17 billion in economic value generated by 2050

Local development projects in the world

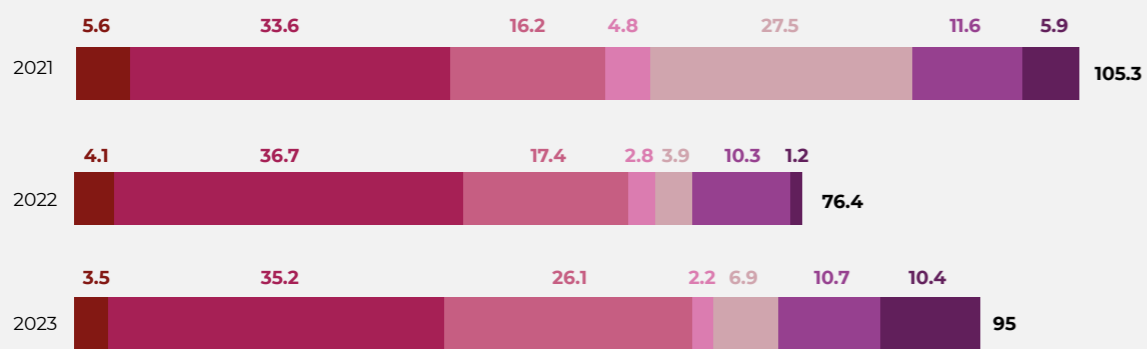
Sectors of intervention



Active projects in **26** Countries

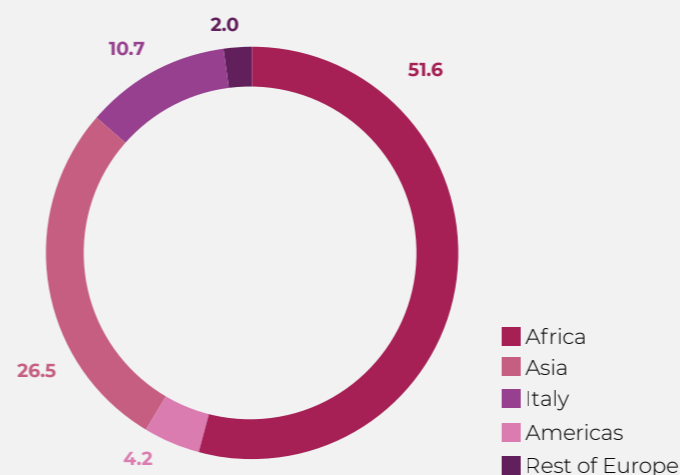


INVESTMENTS FOR LOCAL DEVELOPMENT (€ mln)



■ Access to energy
 ■ Economic diversification
 ■ Education and professional training
 ■ Life on land
■ Access to water and sanitation
 ■ Community health
 ■ Compensation and resettlement
 — Total

INVESTMENTS FOR LOCAL DEVELOPMENT BY GEOGRAPHICAL AREA (€ mln)



PEOPLE REACHED:

35,500 new students supported in access to education
19,000 people supported in access to professional training and supported in economic empowerment
62,000 people supported in access to drinking water
330,000 people supported in access to health services

In the definition and execution of projects, Eni adopts a participatory approach and integrates some relevant transversal themes (such as gender)

PROJECTS IN THE WORLD
Eni defines and implements interventions to support local populations, oriented to promote global human development, favouring access to essential rights such as energy, water, food, education and health. Eni develops initiatives for economic diversification (e.g. agricultural projects, access to micro-credit, promotion of entrepreneurial and infrastructure activities), land protection and vocational training to create new employment opportunities. An essential element for achieving the objectives and inclusive growth, for Eni are alliances with all players operating in the territory

(**Partnership**), pooling resources and human capital. In 2023, 75 cooperation agreements were active, of which 16 socio-economic and 12 health agreements were signed during the year. Furthermore, as of the date of publication of this report, 5 new socio-economic agreement were signed in 2024. On the following pages, details are given for the collaborations in the specific areas of intervention. There are 25 cooperation agreements that call for the implementation of multi-sectoral initiatives active and/or signed in 2023. In the definition and execution of projects, Eni adopts a participatory approach and integrates some relevant transversal themes

(such as gender) and adopts tools and methodologies, in line with the main international standards. The latter include the **LOGICAL FRAMEWORK APPROACH** to structure interventions in the area and the management tool Monitoring, Evaluation and Learning to monitor, evaluate and possibly reshape them to maximise benefits for communities. Local Development projects aim to achieve results and objectives that contribute to the socio-economic development of the communities where Eni is present. They aim to generate positive and lasting change for people as they involve the communities during the various project phases.

Focus on

The gender perspective in Local Development projects

CONTEXT: since December 2020, Eni has adopted an approach to integrate a gender perspective (gender-mainstreaming) into the various phases of business and Local Development projects. This approach includes specific actions and tools for the different sectors of intervention to ensure that impacts on women in local communities are correctly identified, maximising positive ones and preventing negative ones. This is achieved through specific training for local sustainability teams. Eni also identifies women's associations active in the areas in which it operates, involving them in consultations or proposing them for collaboration in the implemented projects.

ANALYSIS: gender equality and women's empowerment are a cornerstone of social context analyses. The status of women is assessed based on major international indices such as the **Gender Inequality Index (GII)**, the **Women Empowerment Index (WEI)** and the **Global Gender Gap Index (GGGI)**. Using a multidimensional approach, these indices assess women's empowerment and quantify the gap between men and women to achieve full equality in key areas such as health, education and participation in economic life.

ACTIVITY: Eni invests in the involvement of women, as it is essential to improve their living conditions, to prevent violence and for future generations, through: (i) long-term projects to create income opportunities, in agriculture and fishing, as economic dependence is closely associated with gender-based violence; (ii) access to education for girls and young women, as increased school attendance prevents early exposure to forms of gender-based violence (such as forced marriages and early pregnancies) and promotes economic independence; (iii) menstrual health initiatives to prevent forms of gender-based violence due to the inaccessibility (including affordability) of hygiene and sanitation products, which is considered a critical barrier to school attendance; (iv) water access and clean cooking projects to reduce women's exposure to the risk of experiencing gender-based violence when collecting water and wood, and free up time to spend on productive and/or educational activities.

NIGERIA

57% of Green River Project farmers (in 126 communities) are women
17 agricultural cooperatives involved are formed entirely by women

GHANA

70% of single-mother households in the project on food security and income opportunities
79% of the people supported in starting a business are women
92.5% of the girls passed their final examinations (vs. 73% in 2018)

EGYPT

76% of participants in vocational training are women
83% of people found a job after training at Youth Centre are women

COMMUNITY HEALTH

Initiatives developed aiming at protecting the right to health, strengthening health systems in host Countries to improve health conditions and therefore contribute to social and health development. These initiatives consist in training activities for health personnel (medical, health and managerial skills), interventions in health infrastructure (equipping, renovation and construction of new facilities), actions to raise awareness among the population and extraordinary support activities for local health authorities in the event of emergencies, disasters or pandemics.

The main areas of focus in 2023 were primary health care, maternal and child health, infectious diseases and non-communicable diseases. The projects were implemented in cooperation with local health authorities and with the involvement of civil organisations, hospitals and scientific partners of excellence. In 2023, a total of 12 new agreements were signed with:

- Local institutions, e.g. in Mexico with the State of Tabasco Ministry of Health to improve the nutrition and the health of mothers and children in the municipality of Cardenas, and in Italy with the Romagna Local Health Unit for an

experimental project aimed at improving primary care and taking charge of chronic diseases in Marina di Ravenna using the Family and Community Nurse figure;

- civil organisations, e.g. in the Ivory Coast with Doctors with Africa Cuamm and the International Rescue Committee to strengthen primary health care services, and in Vietnam with Operation Smile to treat cleft lip and palate in children;
- hospital institutions, such as the IRCCS Policlinico San Donato for the construction of the medical training centre in Port Said, Egypt.

38 implemented active projects in 15 Countries

SOME PROJECT EXAMPLES

PORT SAID, EGYPT (2018-2025)

OBJECTIVE: promotion of primary and emergency health quality services in the Port Said Governorate.

ACTIVITY: supplied 3 hospitals with medical equipment to support cardiology, urology, neurology and gynaecology services; performed health training activities; initiated activities to establish a training centre of excellence for health personnel; and conducted communicable disease awareness campaigns in 50 primary schools. These activities were performed in collaboration with the Ministry of Health and Population and the General Authority of Healthcare.

BENEFICIARIES: 83,813 people reached in 2023 (total target of 751,053 people).



CARDENAS, MEXICO (2023-2026)

OBJECTIVE: improve the state of nutrition and maternal and child health in the municipality of Cardenas, by the strengthening of health services and access to them.

ACTIVITY: conducted health screening in 29 primary and pre-primary schools to identify students suffering from malnutrition, conducted education and nutrition awareness sessions in schools and 10 communities, and provided supplements and equipment to 6 health centres to improve the quality of nutrition services. These activities were performed in collaboration with the Tabasco State Ministry of Health.

BENEFICIARIES: 1,281 children aged 3 to 12 (total target of 1,500).



GELA, ITALY (2022-2023)

OBJECTIVE: strengthening the intensive care network in the Gela area and enhancing the capacity to respond to pandemic events.

ACTIVITY: design and construction of a new intensive care unit with a total capacity of 10 beds, including 2 single filtered rooms for infectious patients and 4 two-bed rooms, with technical and working support rooms, at the Presidio Ospedaliero Vittorio Emanuele, through the redevelopment of 800 sq. m and the addition of 150 sq. m new volume. Activities performed in collaboration with the ASP of Caltanissetta.

BENEFICIARIES: population of Gela (70,000 people and surrounding urban areas).



In 2023, Eni built and/or renovated 32 school and education facilities

EDUCATION

The aim of these projects is to promote general education, skills development and to help ensure access to quality, effective and inclusive education in the long-term for people in the communities in the territories of presence. Examples of the activities implemented are: renovation or construction of school buildings, distribution of school materials and kits for students, awareness-raising campaigns to promote school participation; support for educational programmes for young students, such as workshops, scholarships, courses and vocational training programmes to develop skills and knowledge in the energy and natural resources sector.

In 2023, Eni built and/or renovated 32 school and education facilities, supported the training of approximately 580 national school staff (teachers, school personnel and headmasters) to improve professional and soft skills, including childhood protection practices and teaching methodologies. To promote a sense of school 'ownership' and help strengthen parental responsibility, over 7,000 parents were involved in awareness-raising activities on various topics such as child protection, education, sports, environment, nutrition, health, hygiene, equal opportunities, etc. This led specifically to an improvement in the school attendance rate of male

and female students compared to the values at the beginning of the projects in Mexico, Mozambique (reaching 96% with the first two projects), Egypt (95.3%) and Ghana (reaching 100%). In addition, during the year, Eni supported the academic training of around 650 people providing scholarships for master's degrees, doctorates, postgraduate diplomas and specialisation courses. Projects are implemented in cooperation with local authorities, international organisations and with the involvement of civil organisations. In 2023, there were 13 active education agreements, including 5 new ones signed with UNESCO, AVSI, VIS, IRC and the Ivory Coast Ministry of Education.

SOME PROJECT EXAMPLES

AGRICULTURAL EXPERIMENTATION AND TRAINING CENTRE, VIGGIANO - ITALY (2020-2027)

OBJECTIVE: to set up an 'Agricultural Experimentation and Training Centre (CASF)' serving the Lucanian community promote a more sustainable and profitable agriculture and enhance marginal areas; the development of agricultural experimentation initiatives and professional training and dissemination activities. The Centre acts as a crossroads between the production, training and research systems, promoting technology transfer, good practices and agricultural innovations.

ACTIVITY: conducted 3 experimental tests on agriculture 4.0, involving local start-ups; provided training to operators and students from technical institutes on agronomic issues; and organised school tours for primary and secondary schools. Activities performed in collaboration with FEEM and Consortium Akiris.

BENEFICIARIES: 273 male and 109 female students involved in outreach activities; 199 male and 114 female students involved in training activities; 27 workers employed in activities of whom 18 were male and 9 female.



SUPPORT FOR QUALITY PRIMARY EDUCATION, ABIDJAN DISTRICT & SOUTH COMOÉ REGION - IVORY COAST (2022-2025)

OBJECTIVE: helping to improve access to education and ensure quality learning for primary school students. **ACTIVITY:** completed rehabilitation work on 22 schools (20 primary and 2 secondary) including access to electricity, water and sanitation; distributed textbooks and school materials; started a training programme for teachers and remedial courses for students. Activities performed in collaboration with AVSI.

BENEFICIARIES: 13,027 student beneficiaries.



APPLIED TECHNOLOGY SCHOOL, PORT SAID - EGYPT (2021-2024)

OBJECTIVE: contribute to improving the technical education system and access to employment opportunities for young people.

ACTIVITY: expansion and rehabilitation of an existing school; development of technical curricula (energy, electrical maintenance, ICT, logistics) and related laboratories, with the participation of many students and young people who attended the Training Academy; creation of a 'Centre of Excellence for Access to Employment' by integrating training services and setting up a permanent labour market observatory. Activities performed in collaboration with the Elsewedy Electric Foundation.

BENEFICIARIES: 264 students and 260 young people involved in training.



ACCESS TO WATER AND SANITATION

The aim of these initiatives is to support local communities in accessing clean, safe water and sanitation to improve the living conditions and health of people, especially in areas where access to clean water is limited or non-existent. Activities in-

clude the construction of wells, water treatment systems, upgrading water networks and improving distribution, provision of sanitation facilities, hygiene education programmes and school and community initiatives. During the past year, within the framework of 7 initiatives, 62,000 people improved their access to drinking

water and its use through the construction of 75 infrastructures and the implementation of awareness-raising activities. In 2023, a new water access agreement was signed with OIKOS, a CSO operating in Mozambique. In addition to this new agreement, in Mozambique, an agreement with UniLúrio, the University of Lúrio, is active from 2021.

Within the framework of seven initiatives, 62,000 people improved their access to drinking water and its use

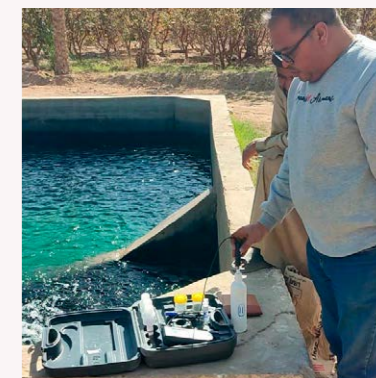
AN EXAMPLE PROJECT

ACCESS TO WATER WITHIN THE AGRICULTURAL PROJECT, MATROUH AND SOUTH SINAI GOVERNORATES - EGYPT (2021-2024)

OBJECTIVE: helping to increase the resilience to desertification in the Seventh Community and Wadi Mukattab rural communities.

ACTIVITY: improved access to water through the installation of more than eighty water supply systems for agricultural and domestic use, accompanied by the provision of improved sanitation services to 25 housing units; trained and supported more than 120 livestock and agricultural workers to increase the productivity of their economic activities. Activities performed in collaboration with the Desert Research Centre.

BENEFICIARIES: reached more than 2,000 people.



LIFE ON LAND

Through these projects, Eni intends to enhance and protect the local natural heritage, restore ecosystems, and support projects for the conservation and rehabilitation of aquatic ecosystems. Initiatives include support activities in waste management for communities, rehabilitation of disposal sites, re-

mediation activities to restore native vegetation, tree replanting, biodiversity conservation, awareness-raising campaigns on the risks of **OIL SPILL** pollution and the importance of biodiversity protection. Within this context, in 2023 Eni signed an agreement with UNESCO in Mexico for a technical and socio-cultural feasibility study

for the Mezcalapa-Samaria Subbasin Water Security Plan in the state of Tabasco.

Eni intends to enhance and protect the local natural heritage, restore ecosystems, and support projects for the conservation and rehabilitation of aquatic ecosystems

AN EXAMPLE PROJECT

QUALITY IMPROVEMENT FOR THE ENVIRONMENT, SAMBOJA AND MUARA JAWA - INDONESIA (2023)

OBJECTIVE: supporting projects on environmental issues in certain areas of the Country.

ACTIVITY: planted 20,000 fruit trees in the Samboja area; initiated awareness-raising campaigns on the importance of biodiversity protection, the crucial role of trees in reducing emissions and improving community health, and on waste management; transformed a waste disposal site to convert plastic and organic waste into biofuel in the Muara Jawa area. Activities performed in collaboration with a contractor and the two area local authorities.

BENEFICIARIES: more than 7,000 people.



Eni has supported the cultivation of 264 hectares of sustainable agriculture with the training of around 15,000 farmers and producers

ECONOMIC DIVERSIFICATION

The objective of these projects is to foster food security, the development of entrepreneurial, agricultural, fishing and infrastructural activities, fostering new job opportunities, women and youth empowerment and promoting economic growth. Examples of these initiatives include: micro-entrepreneurship and job placement projects; employment and self-support projects (e.g. sustainable agriculture, responsible tourism, local handicrafts, production of goods and services); programmes of entrepreneurial

training, mentoring and consulting for small businesses and start-ups; vocational training on renewable energy, environmental management, etc. Eni has supported the cultivation of 264 hectares of sustainable agriculture with the training of around 15,000 farmers and producers, supported around 150 co-operatives and associations in the agri-food sector in Congo, Egypt, Indonesia, Italy, Mexico, Mozambique and Nigeria even through the construction of 22 infrastructures for agricultural use (wells, tanks, centres for the collection and sale of products). 225 people were trained on

entrepreneurship, financial literacy and business management and 35 new businesses were created/formalised, after 2022 training sessions. In addition, 226 young people found jobs. There were 11 active partnerships in 2023 and included 5 new agreements signed with two international organisations, respectively, with Ethical Fashion Initiative in the Ivory Coast, a programme of the International Trade Centre (ITC) – a joint agency of the United Nations and the World Trade Organisation (WTO), and 3 with civil organisations, namely Banco Alimentare, ADPP and Technoserve.

SOME PROJECT EXAMPLES

FOOD SAFETY, GELA - ITALY (2023-2024)

OBJECTIVE: providing support in the recovery and distribution of food surpluses to combat waste and provide support to the most vulnerable families.
ACTIVITY: contribute to the transport costs of foodstuffs from the Catania hub of the Banco Alimentare della Sicilia ODV to the charitable organisations located in Gela, responsible for the distribution of the food to the final beneficiaries; optimisation of logistics; and stipulation of strategic agreements with operators in the sector. Activities performed in collaboration with the Banco Alimentare Foundation and Banco Alimentare della Sicilia ODV.
BENEFICIARIES: contributed to the distribution of about 10,000 tonnes of food, benefiting 5,500 individuals.



ECONOMIC DIVERSIFICATION, ELLEMBELE DISTRICT - GHANA (2022-2023)

OBJECTIVE: improving economic opportunities and food security for communities in the district.
ACTIVITY: organised trainings on financial management, agronomy topics, pest management and post-harvest techniques; distributed starter packs to beneficiaries involved in livestock and agriculture; conducted mentorship and coaching activities. Activities performed in cooperation with the NGO TechnoServes.
BENEFICIARIES: 182 people were trained, of whom 115 in home garden cultivation and 67 in agriculture and animal husbandry.



Some projects aim to reduce the use of non-renewable energy sources and mitigate the effects of climate change

ACCESS TO ENERGY JT

The purpose of these activities is to provide access to energy in communities and areas where availability is limited or absent. Some projects aim to reduce the use of non-renewable energy sources and mitigate the effects of climate change, to provide energy for agriculture, the production of local goods and

services and the development of small businesses. Among the activities implemented: the development of energy microgrids in rural areas; procurement, supply and installation of electrical components; construction of transmission lines and connection to the national grid; support in accessing improved, certified and quality cooking systems;

awareness-raising activities in local communities on energy efficiency and savings and renewable energy sources; installation of photovoltaic panels; and installation of more efficient energy systems. As part of the initiatives for access to energy from renewable sources, Eni has launched a project with ► AVSI in Kenya.

AN EXAMPLE PROJECT

AHOADA WEST LOCAL GOVERNMENT AREA - NIGERIA (2021-2023)

OBJECTIVE: improve electricity supply to communities in the Ahoada West - Local Government Area.
ACTIVITY: the activities include the procurement, supply and installation of electrical equipment (transformers and other accessories), the construction of the 33 kV transmission line and the connection to the national grid. Activities performed in collaboration with Ahoada-West.
BENEFICIARIES: 11,770 people from the Akinima, Oruma and Oshie communities.



Case Study



Country case - Mozambique



Eni has been present in Mozambique since 2006. In 2011, with the Coral South gas extraction project, Mozambique took a leading global role in liquefied natural gas (LNG). This project generates several benefits such as growth in local employment, Thanks to a greater stability for energy supply for the domestic and European markets, and diversification of supply sources. Thanks to agreements with institutional counterparts and civil society organisations, many initiatives were launched to contribute to the socio-economic development of local communities in line with the UN 2030 Agenda and National Development Plans. In 2023, two new agreements were signed with ► ADPP and ► OIKOS, two civil society organizations, and three new agreements, for community health, with ► Helpcode, ► AISPO (Italian Association for Solidarity Among People) and ► Comunità Sant'Egidio ACAP. These five agreements are in addition to seven other partnerships already active in 2023 in the Country. In addition, a new cooperation agreement was signed with the Ministry of the Environment in the first half of 2024.



ECONOMIC DIVERSIFICATION

Strengthen food security and agricultural value chain development in the Province of Manica (2022-2026)
OBJECTIVE: promote the improvement of food security and farmers' incomes through the adoption of Climate Smart Agriculture (CSA) practices and technologies and by increasing market access for producers.
ACTIVITY: planned agricultural campaign to implement 150 demonstration fields; trained 3,095 farmers on improved agricultural production techniques and conservation agriculture; distributed 28,399 coffee seedlings; carried out monitoring visits; provided technical assistance and marketing support. Activities performed in collaboration with NCBA CLUSA.
BENEFICIARIES: 3,095 farmers involved directly.

ACCESS TO ENERGY

Clean cooking (2021-2024)
OBJECTIVE: improve efficiency in the use of woody biomass, reducing the impact on natural resources by promoting the adoption of improved cookstoves in communities in the Pemba area.
ACTIVITY: distributed 4,877 improved cookstoves; hired and trained 12 community promoters to support the use of cookstoves; supported 5 local small businesses to produce cookstoves efficiently. Activities performed in collaboration with AVSI.
BENEFICIARIES: 24,385 families were reached by providing access to improved cookstoves. 96.62% of the beneficiaries prepare more than one meal a day with these cookstoves.

COMMUNITY HEALTH

Improvement of emergency services in Pemba (2023-2026)
OBJECTIVE: improvement of emergency services at the Pemba Provincial Hospital.
ACTIVITY: supply of medical equipment; renovation of the intensive care and radiology wards; training of the personnel of the two wards to enhance medical and maintenance management skills, and improve the sustainability of the facility; infrastructure work on the two wards has begun, after which radiology will have a Computerized Axial Tomography (CT) machine installed, while intensive care will have a new 4-bed room according to international standards. Activities performed in collaboration with AISPO - Italian Association for Solidarity Among People.
BENEFICIARIES: 4,575 people will have access to improved health services.

LIFE ON LAND

Project PRORES in Cabo Delgado, Mecufi District (2021-2025)
OBJECTIVE: enhance the resilience of local communities by contributing to the protection and restoration of the mangrove ecosystem through sustainable economic activities, for instance beekeeping.
ACTIVITY: restored 6 hectares of mangroves and distributed materials to create plant nurseries; placed beehives for beekeeping and batches of mussels for aquaculture; continued educational and awareness-raising activities for sustainable environmental management with parents, students and teachers. Activities performed in collaboration with the local university, Unilurio.
BENEFICIARIES: 274 students were involved in training and awareness-raising activities on biodiversity, specifically focusing on mangrove protection.

ACCESS TO WATER AND SANITATION

Project PRORES in Cabo Delgado, Mecufi District (2021-2025)
OBJECTIVE: ensure equitable access to safe water by increasing the coverage of rural water supply services for communities.
ACTIVITY: delivered 8 wells to local communities, 6 of which were constructed in 2023 and 2 in 2022; built 5 toilet blocks in 5 primary schools; implemented awareness-raising activities for good sanitation practices, including training on maintenance and management of the water systems implemented. Activities performed in collaboration with the local university, Unilurio.
BENEFICIARIES: awareness-raising for 35,684 on the sustainable use of water, its proper management and good hygiene practices.

EDUCATION

Integrated education in the Paquitequete Community (2021-2024)
OBJECTIVE: ensure fair and quality access to primary education.
ACTIVITY: provided meals to primary school students and kindergarten children, and additional teaching materials and equipment to schools in Paquitequete, Kugarata and Kamilamba; carried out 5 pedagogical training sessions for teachers and educators and 4 training sessions for school leaders; supported the establishment of 4 school councils and 2 kindergarten councils; supported adult literacy and awareness-raising campaigns. Activities performed in collaboration with ADPP.
BENEFICIARIES: 654 students (609 primary school and 45 pre-school) benefited from the improved educational service provided. 96% of the students completed the school year and early school leaving was reduced by 2%, while more than 2,500 parents were involved in school activities.

Partnerships for development

In line with the Paris Agreement, the UN 2030 Agenda, National Development Plans and the Guiding Principles on Business and Human Rights (UNGPS), Eni promotes initiatives to support local communities through strategic public-private partnership alliances. Through the 'Dual Flag' approach, Eni is committed to gener-

ating long-term value with the objective of transferring know-how by stimulating the development of entrepreneurial activities to create new job opportunities for the communities in which it operates. Access to energy, professional training, access to water and sanitation are other sustainable development initiatives that Eni puts in

place along the entire energy value chain. These local development projects are leveraged also through the development of strategic partnerships with civil society organisations, UN programmes and international organisations, institutions, bank foundations, funds and other key players for development cooperation.

Interview



RAYMOND TAVARES

Representative of the United Nations Industrial Development Organization (UNIDO) in Central Africa. With more than 25 years of experience in the areas of innovation and international development, currently oversees UNIDO projects in the region.

► [For the full version of the interview, click here](#)

Exploring the Path of the Oyo Center with Unido JT

The project "Operationalisation of the Oyo Centre of Excellence for Renewable Energy and Energy Efficiency (RE&EE) in the Republic of the Congo", is a partnership between the Republic of the Congo, UNIDO (United Nations Industrial Development Organization) and Eni. Its key objectives are to support the Country and the wider region through research and capacity building in the RE&EE.



The last time the Oyo Centre was featured in our yearly reports, the project was still in the design stage, could you tell us what happened since then?

Following the inauguration in April 2023, the project entered its start-up phase. The activities carried out so far are largely related to its institutionalization, to ensure a solid foundation for the technical activities. Our current focus has been on setting up the necessary rules and procedures as well as recruiting – and capacitating – a diverse team that makes up the core staff of the Oyo Centre.



Speaking of upcoming work, what is ahead for the Oyo Centre? Could you tell us more about its objectives?

The ultimate objective of the Oyo Centre is to contribute to the creation of an integrated and inclusive sustainable energy market in the Country and the wider region. It will work on important themes such the water-energy-food nexus, rural electrification, and development of the cleantech sector: all areas of intervention that fit within the broader umbrella of RE&EE. More concretely, the Oyo Centre will work towards becoming a reference for the emergence of RE&EE in the Congo and the Central African region, by focusing on applied research,

capacity building and knowledge transfer. We are talking here about a wide range of beneficiaries: students, technicians, policy makers, private sector with the goal to help the capacities of RE&EE stakeholders and, by extension, the entire population. Gender and youth will also be an important cross cutting issue to the Oyo Centre's activities: women and youth are disproportionately affected by the lack of modern energy services.



You have mentioned that a big focus is placed on ensuring the sustainability of the Oyo Centre beyond the project. Could you please expand on this?

Sustainability is definitely the cornerstone of the project. Our work in UNIDO is to assist the Oyo Centre in its journey towards becoming a reference point for RE&EE – and continuing to be beyond project closure. UNIDO has extensive experience in establishing similar institutions across the world through the Global Network of Regional Sustainable Energy Centres (GN-SEC). We know that ensuring sustainability starts with a strong institution, as I previously mentioned. Another essential element is to establish partnerships and collaborations, which are instrumental to ensure the Oyo Centre's inclusion in the national and regional ecosystem. We have started to engage with partners that will complement and enhance the Oyo Centre's work, notably the European Union, which will support research and capacity building activities. We are also looking to expand our collaboration with universities, NGOs and other institutions. By actively participating in the broader energy landscape, we aim to create lasting impacts and contribute to the long-term sustainability of the energy sector in the Congo and the Central African region.

Local content

Eni's Local Content approach is structured along different lines of intervention. These include the activation of local supply chains, to increase the level of competitiveness of local companies and increase their capacity to support

Eni initiatives; the involvement of local employment; the transfer of skills and knowledge; local development programmes to foster the growth and diversification of the local economy. Since 2016, Eni has been using the **ELCE (ENI**

LOCAL CONTENT EVALUATION), model, validated by Politecnico di Milano, to assess on a quantitative basis the benefits brought to a national level in terms of economic production and occupational impact.

Case Study



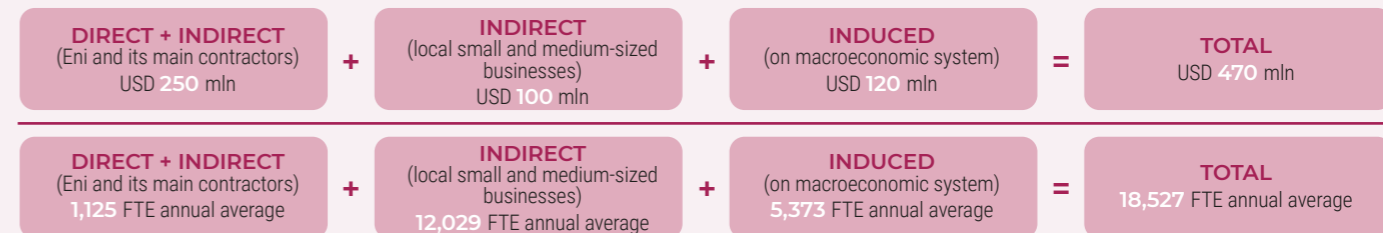
Application of the ELCE model to traditional and new businesses JT

Application to traditional business - Project Baleine (Phase 1 and 2)

CONTEXT: the Baleine project, which represents the largest hydrocarbon discovery in the Ivory Coast sedimentary basin, is being developed in three phases: (1) production through the FPSO (Floating Production Storage Offloading) of Baleine started in 2023; (2) a second FPSO is scheduled to start-up at the end of 2024; (3) further development is planned, which will bring the total production of the field to 150,000 bbl/d oil and 200 Mscf/d gas.

STUDY AND RESULTS: the **ELCE** model analysed the economic and employment impact generated by the project during the construction and operational phases (2023-2039). For every USD billion spent on goods and services, there will be a total local impact in economic terms of USD 470 million, of which USD 250 million from Eni and its main contractors and USD 100 million resulting from the backward activation of local small and medium-sized enterprises. The model also estimates local direct, indirect and induced employment activation of about 18,500 Full Time Equivalent (FTE), of which about 65% in small and medium-sized local businesses operating in the supply chain.

For every USD billion spent on goods and services, an impact of:



Application to one of the new businesses - Gela biorefinery

CONTEXT: transformation of the Gela Refinery into a biorefinery started in 2014 and concluded in 2019. It is functional for the development of products with a lower carbon footprint and inspired by the principles of the circular economy.

STUDY AND RESULTS: the **ELCE** model analysed the economic and employment impact of generated in 2022, limited to biorefinery-related activities. The results show that for every EUR 1 million spent by the biorefinery on goods and services, the overall impact at regional level is EUR 1.059 million while at national level it is over EUR 2 million. On an employment level, considering the total direct, indirect and induced perimeter, for each EUR million spent, the estimated impact is 17 Sicilian FTE and 20 Italian FTE, confirming the high percentage of regional employment activated by the biorefinery's activity.

For every EUR million spent on goods and services, the impact estimated at national and regional level is:

