

Country by Country report **2017**





We are an energy company.

We are working to build a future where everyone can access energy resources efficiently and sustainably.

Our work is based on passion and innovation, on our unique strengths and skills, on the quality of our people and in recognising that diversity across all aspects of our operations and organisation is something to be cherished. We believe in the value of long term partnerships with the countries and communities where we operate.

M
I
S
S
I
O
N

Country-by-Country Report

2	Introduction
2	Eni Group organizational structure
4	Basis of presentation
8	Country-by-Country Report
8	Eni Group – summary
10	Europe
18	Africa
21	Asia and Oceania
25	Americas

Introduction

The “Base erosion and profit-shifting - BEPS” action plan promoted by the Organisation for Economic Cooperation and Development (OECD) with the endorsement of the G20 countries is designed to ensure that taxable income of multinational enterprises (MNEs) is apportioned to the jurisdictions where their economic activities are occurring proportionally to value generation. “Base erosion” means the reduction in a country’s overall tax revenues as a consequence of “profit shifting” i.e.: the artificial contractual arrangements under which MNEs move profits from one tax jurisdiction to another in order to minimize income tax payments.

Eni adheres to the principles of the OECD’s BEPS project and the Group’s tax strategy as approved by the Eni’s Board of Directors on May 24, 2018 fully uphold those principles. Management decisions are driven by industrial and commercial objectives, and tax considerations support the achievement of those objectives. Eni does not engage in “aggressive tax planning”, which consists in artificial structures that are purely tax-driven, or in transactions lacking economic substance and designed to obtain unfair tax advantages. The Group’s core hydrocarbon exploration, development and extraction business, which generates almost all of the income taxes incurred by Eni, is subject to tax in the countries owning oil and gas reserves and where the Group oil&gas operations are carried out, in accordance with local contractual provisions and tax rules. Therefore, Eni fulfils its tax obligations in the countries where the Group’s economic activity is pursued and where value is generated.

The BEPS Action Plan developed by the G20 countries and by the OECD is divided into 15 action points. Action 13 (Transfer Pricing Documentation and Country-by-Country Reporting) requires MNEs to prepare a “BEPS Country-by-Country Report” (CbC Report) presenting a MNE’s group allocation of income, taxes and business activities on a tax jurisdiction-by-tax jurisdiction basis. The CbC Report is a tool enabling tax administrations to undertake risk assessment and is forwarded by the tax administration of the MNE’s ultimate parent company to all tax administrations which have signed an agreement to exchange such reports.

In Italy, in accordance with Law no. 208/2015 as enacted by Ministry of Economy and Finance Decree 23/2017, Eni has to submit a CbC Report to the Italian Tax Agency in each fiscal year. This submission has to conform to the reporting template approved by the OECD. Although Eni does not have any obligation to share this information with the market and the public, the Board of Directors has decided to publish its CbC Report from fiscal year 2017, in the belief that this will enhance transparency and make a wide reach of stakeholders knowledgeable about this matter. In elaborating the data, certain assumptions have been adopted to help stakeholders gain more insight about the report. These have been described in the reporting criteria presented hereinafter.

Eni Group organizational structure

1. Subsidiary undertakings

As at December 31, 2017, the Group was structured in the following way:

		Italy	Outside Italy
Subsidiary undertakings	215	36	179
Exploration & Production segment	144	10	134
Other business activities	71	26	45

The 134 foreign subsidiary undertakings engaged in the Exploration & Production (E&P) segment are held by three international holding companies owned by Eni SpA: Eni International BV, a company incorporated in the Netherlands, Eni Investment Plc, a company incorporated in the UK and Eni Petroleum Co Inc., an operating holding company incorporated in the USA.

These 134 subsidiary undertakings engage in exploration, field development and extraction of hydrocarbons in 46 countries where reserves are located. Operations are based on concessions awarded by governments or on contracts with governments or state-owned companies. According to variable schemes, these contracts

apportion the volumes of hydrocarbons produced between the Eni subsidiary and the government/state-owned entities.

Therefore, the amount of taxes is totally unrelated to the jurisdiction in which the Eni subsidiary is incorporated or resident for tax purposes. E&P subsidiaries can be incorporated in the countries where they operate, or can have their tax jurisdiction in another country and conduct operations through a permanent establishment (PE), whose income is subject to taxation in accordance with the tax laws of the country where operations are carried out.

The breakdown by jurisdiction of the 134 E&P subsidiaries incorporated outside Italy is given below.

- 67 subsidiaries are incorporated in the countries where they operate or act as holding companies; many non-OECD countries require legal entities to be incorporated under local law in order to qualify for mineral rights and petroleum contracts.
- 67 subsidiaries are incorporated abroad, mainly in the Netherlands, in the UK and in Italy, and conduct operations in hydrocarbon reserve-rich countries through PEs. From the perspective of an industry player like Eni, the incorporation of a legal entity in a jurisdiction other than that where operations are located is considered when feasible with aim to standardize certain aspects of corporate governance across Group subsidiaries as in the case of the ability to hold corporate documentation and records in English and to prepare financial statements in US dollar, which is the currency generally adopted in the oil and gas sector.

With regard to Eni's other business activities – sale of gas, power and LNG, refining and marketing of petroleum products, production and sale of chemical products, and business support services, in particular finance and insurance – those outside Italy are conducted mainly in Europe, through local subsidiaries. There are 45 of these local subsidiaries: 8 subsidiaries in Gas & Power, 17 subsidiaries in Refining & Marketing, 12 subsidiaries in Chemicals, and 8 subsidiaries in "Corporate and other Activities" segment, 4 of which provide financial services to the Group companies. The foreign operating subsidiaries mainly engage in marketing and distribution activities (25 subsidiaries); 12 subsidiaries engage in manufacturing activity.

Figures for all the 215 Eni subsidiaries as at December 31, 2017, are included in the CbC Report below.

2. Joint operations

Eni participates to 12 joint operations that are recognized in the Group's consolidated financial statements – prepared under IFRS – by applying the proportional consolidation method based on Eni's working interest in each venture. 5 of these joint operations are incorporated outside Italy. Among the Italy-based joint operations, Mozambique Rovuma Venture SpA engages in petroleum operations in Mozambique where development is underway following the final investment decision ("FID") made to exploit the large offshore Coral gas discovery in the portion of Area 4 exclusively owned by the Area concessionaires, whereas pre-FID activities are underway at the other large Mamba gas discovery which reservoir extends to adjoining Area 1 owned by other concessionaires.

Figures for Eni's joint operations as at December 31, 2017, have been included in the Eni Group CbC Report based on the same consolidation method as in the Group consolidated financial statements for IFRS purpose.

3. Low-tax jurisdictions

As at December 31, 2017, Eni controlled 10 subsidiaries, which were resident or had PEs in countries or territories that can be classed as "Low-Tax Jurisdictions" under Italian law. According to Italian tax rules, countries or territories offer a preferential tax regime when their nominal tax rate is lower than 50% of that in Italy (27.9%; Italian corporate tax rate – Ires 24%; Italian regional income tax – Irap 3.9%). Of the above 10 companies, 8 companies became part of the Group following acquisitions in the upstream segment over the last decade (particularly Lasmo Plc and Burren Energy Plc groups). The tax regime applicable to these entities is the following:

- 6 entities are subject to taxation in Italy and for this purpose they are included in the tax return presented by the parent company Eni SpA;

- 4 entities are taxed in accordance to the tax rules of the jurisdictions of residence due to the waiver obtained from the Italian tax administration based on the level of taxation which they are subject to.

Basis of presentation

Different reporting criteria vs. the report “Payments to Governments”

The reporting criteria of the CbC Report are slightly different from those adopted in the preparation of the “Report Payments to Governments”¹, which Eni is required to prepare and publish in accordance with the reporting obligations on the extractive industries set by Directive 2013/34/EU (the EU Accounting Directive), as enacted in the Italian law by Legislative Decree N° 139 of August 18, 2015.

In non-operated petroleum contracts, the item “cash taxes paid” of the CbC Report includes the share of cash taxes paid by the operator on behalf of Eni to the host jurisdiction, which are charged to Eni through a partner billing process (cash calls); whereas in contracts where Eni is operator, only the Eni’s share of cash taxes is reported even though Eni in its capacity as operator is due to fulfil the obligation to pay to the host country 100% of the due amounts of taxes (Eni’s share of taxes and that of its partners, which is refunded to Eni through a partner billing process). In this respect, the CbC reporting criteria differ from the ones adopted in the “Report Payments to Governments”, where Eni is required to disclose only direct payments made by Eni to host Governments, which are reported at 100% in operated contracts. Below a summary of the main differences between the two reports is presented:

Country-by-Country	Payments to Governments
<ul style="list-style-type: none">• Income tax payments reported by subsidiaries and joint operations relate all of Eni’s businesses;• Payments of current income taxes are recorded based on Eni’s share, therefore:<ul style="list-style-type: none">• where Eni, acting as a project operator, makes tax payments also on behalf of other project partners, only the Eni’s share of payments is recorded;• where Eni is a project follower and therefore does not make any tax payments, Eni’s share of the payments made by the operator on behalf of Eni is recorded.	<ul style="list-style-type: none">• Income tax payments reported by subsidiaries and joint operations regard only the upstream business;• Payments of current income taxes are recorded by the entity that makes them directly, therefore:<ul style="list-style-type: none">• where Eni, acting as a project operator, makes tax payments also on behalf of other project partners, the full amount of each payments is recorded;• where Eni is a project follower and therefore does not make any tax payments, Eni does not record any payments.

Reporting MNE and constituent entities

The constituent entities are all the subsidiary undertakings controlled directly or indirectly by Eni SpA, which is the ultimate parent company of the Eni Group. Eni SpA has an obligation to transmit the data provided in this report to the Italian Tax Agency. The data in this report are those of the companies included in Eni SpA’s consolidated financial statements, prepared in accordance with international financial reporting standards (IFRS), and those of certain subsidiaries excluded from consolidation because of immateriality or their consolidation does not entail any effect on the Group consolidated results of operations. Furthermore, this report includes the data for proportionally-consolidated entities (joint operations).

Treatment of permanent establishments

The data for branches and PEs of the constituent entities are reported by reference to the tax jurisdiction in which the PE is located and operates and not by reference to the tax jurisdiction of residence of the legal entity. Residence tax jurisdiction reporting for the business legal entity of which the permanent establishment is a part exclude financial data related to the permanent establishment.

Source of data

The data presented in this report, on an aggregate basis by tax jurisdiction, have been taken from the separate financial statements of the local Group subsidiaries. Differences between local GAAP and the IFRS used to prepare the Group’s consolidated financial statements are deemed to have a negligible impact on the financial figures in this report.

¹ The report is available at Eni’s web site www.eni.com

Reporting period

The reporting period is the fiscal year 2017 of the parent company Eni SpA, which is the calendar year.

Structure and content

This report shows a table for each of the tax jurisdictions in which the Eni Group operates. The data in each tax-jurisdiction table have been obtained by aggregating data taken from the local financial statements of all the Eni subsidiaries that are tax residents of the jurisdiction or operate there through a PE. The data for each PE have been taken from the accounting records of the subsidiary of which the PE is a part, separating them from data related to the head office or other PEs of the subsidiary.

Content of each country table

The following aggregate data are given for each tax jurisdiction.

• Total revenues

The revenues column shows the total revenues generated in the year by all the Group subsidiaries resident in the tax jurisdiction or operating there through a PE. Separate fields are used to indicate the revenues generated by transactions with unrelated parties and by inter-company transactions, even within the same tax jurisdiction. Revenues include all items of income, e.g. revenues from sales of products and services, royalties from industrial patents, interest income, gains from the sale of plant, property and equipment, intangible assets and equity investments, unrealized profits (such as the fair value of derivatives held for purposes other than hedging), and profits from investments, with the exception of inter-company dividends. Gains recognized in comprehensive income are also excluded.

• Profit (loss) before income tax

This column shows the sum of the pre-tax profits and losses recorded in the year by all the constituent entities resident in the tax jurisdiction or operating there through a PE. Pre-tax profit of the Group ultimate parent company, Eni SpA, and of the Group's main sub-holdings are stated net of inter-company dividends that are excluded from taxation in the holdings' residence tax jurisdiction² because those dividends are paid out of earnings that have been taxed in the tax jurisdictions where they have been generated.

• Income tax paid (on cash basis)

This column shows the income tax paid during the year by all the constituent entities resident or operating through a PE in the relevant tax jurisdiction. Taxes are reported on a cash basis and include taxes paid by the constituent entities to the residence tax jurisdictions and to all other tax jurisdictions. In this respect, they include withholding taxes paid by other Group entities on payments to the constituent entities in the jurisdiction, as in the case of the provision of intercompany services.

• Income tax accrued (current year)

This column shows the accrued current tax expense recorded on taxable profits or losses of the year of reporting of all the constituent entities resident or operating through a PE in the tax jurisdiction. It does not include deferred tax assets or liabilities, or provisions for uncertain tax liabilities.

Reconciliation between accrued current tax expense of CbC report and income taxes recorded in the Eni consolidated financial statement

(€ million)	2017
Accrued current tax expense (CbC report)	4,008
Net deferred taxes	(541)
Income taxes of consolidated profit and loss account	3,467

• Taxes in-kind

With regard to extractive activities, taxes both paid and accrued include in-kind volumes due by Eni to local tax authorities as part of production sharing agreements "PSAs", whereby tax obligations in charge of the

² In Italy, inter-company dividends are taxed up to 5% of their gross amount, which is subject to the corporation statutory tax rate.

international oil company are settled by a national agency or corporation out of the production entitlement (profit oil) of the international partner. The monetary value of those payments is determined based on market prices in accordance of applicable provisions of each PSA.

• **Stated capital**

This column shows the stated capital of all the constituent entities resident in the tax jurisdiction. In the case of each PE, the stated capital is reported in the jurisdiction where the legal entity of which it is a part is tax resident.

• **Accumulated earnings**

This column shows the accumulated earnings of all the constituent entities resident in the tax jurisdiction. In the case of each PE, accumulated earnings are reported in the jurisdiction where the legal entity of which it is a part is tax resident.

• **Number of employees**

This column shows the total number of employees employed at the end of the fiscal year by all the constituent entities resident or operating through a PE in the relevant tax jurisdiction. OECD guidelines for the preparation of the CbC report allow to include in the number of employees the independent contractors participating in the ordinary operating activities of the MNE. On this basis, Eni reports as employees the number of independent contractors in those countries where it is particularly significant. In certain extractive initiatives, Eni and the host Country agree to assign the operatorship of a given initiative to an incorporated joint venture, a so-called operating company. The operating company in its capacity as the operator is responsible of managing extractive operations with own personnel. Those operating companies are not controlled by Eni. Libya, Egypt, Kazakhstan and Algeria are the most important countries of Eni presence where the number of employees also includes Eni share of the number of employees hired by local operating companies. The Eni share is determined by reference to Eni's participating interest in share capital of those operating companies.

• **Tangible assets other than cash and cash equivalents**

This column shows the sum of the book values of all the tangible assets of the constituent entities resident or operating through a PE in the tax jurisdiction. It excludes intangible assets and all financial assets (shares, securities, receivables, derivative assets, etc.).

• **List of all the constituent entities of the Eni Group included in each aggregation per tax jurisdiction.**

The report lists the names of all the legal entities resident or operating through a PE in the relevant tax jurisdiction. In the case of each PE, the tax jurisdiction of residence of the legal entity of which it is a part is also reported. The name of the tax jurisdiction under whose laws a constituent entity is incorporated or organized has also been reported in those rare circumstances where it is different from the tax jurisdiction of residence.

• **Business activity**

The main business activity is indicated for each constituent entity operating in the relevant tax jurisdiction.

• **Eni business area**

The Eni business segment is indicated for each constituent entity operating in the relevant tax jurisdiction.

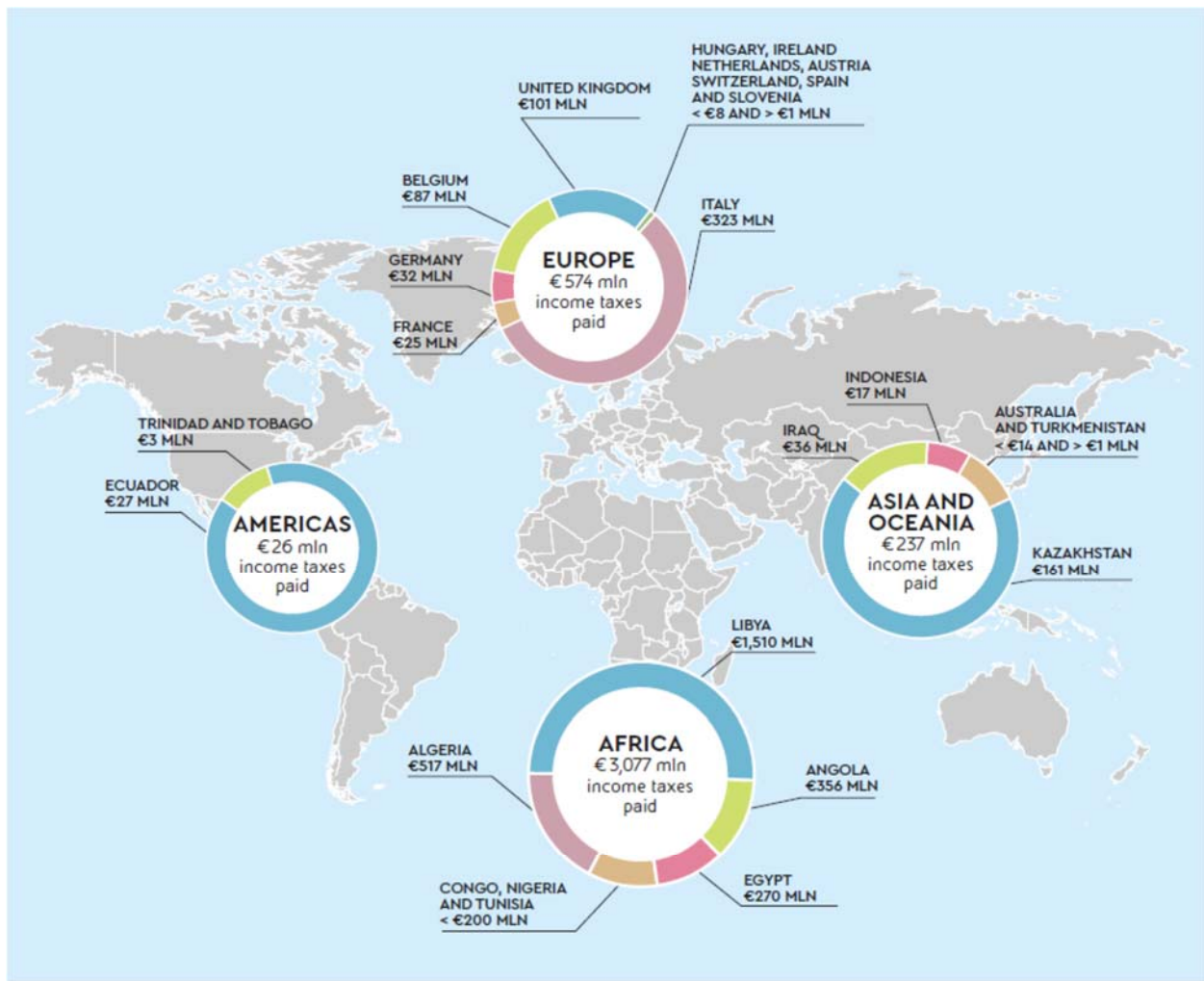
Reporting currency

The reporting currency is the euro. Amounts are stated in thousands of euros. Amounts reported in currencies other than the euro have been translated into euros at the average exchange rate for the fiscal year.

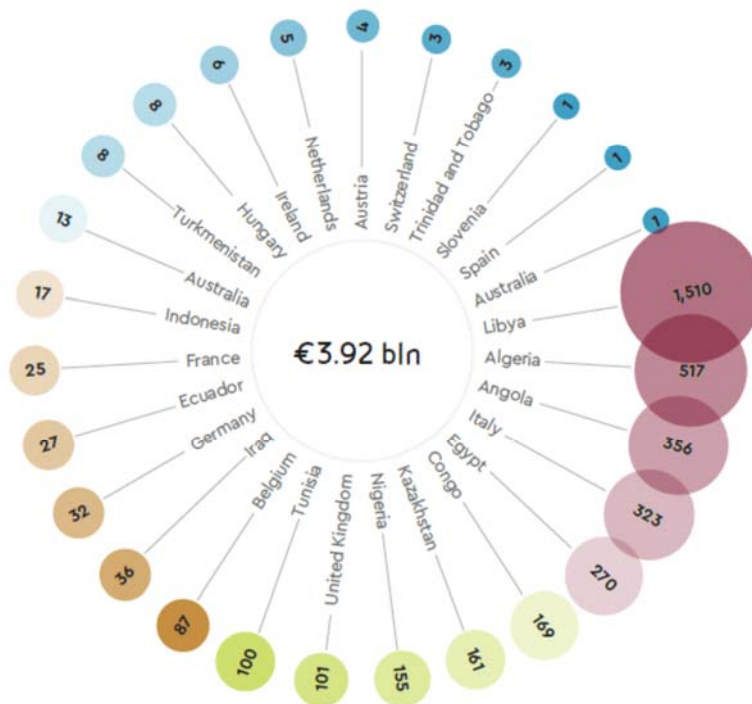
Materiality threshold

Amounts lower than €1,000 have not been reported.

The following chart summarizes the tax contributions made by Eni Group in the countries where it operates.



INCOME TAXES PAID
(€ million)



Eni Group – summary

(€ thousand)								
FULL YEAR 2017	Total revenues	Profit (loss) before Income tax	Income Tax Paid (on Cash Basis)	Income Tax Accrued - current year	Stated capital	Accumulated Earnings	Number of Employees (number)	Tangible Assets other than Cash and Cash Equivalents
EUROPE	80,580,817	2,262,613	574,242	715,888	38,860,183	25,195,447	25,731	21,447,748
Austria	1,097,130	52,110	4,421	5,213	132,278	66,844	122	127,904
Belgium	1,055,250	(390,429)	86,901	86,439	2,975,525	(285,663)	223	2,651
Croatia	26,978	(11,215)					32	106,916
Cyprus	1	(23,889)			538,005	(260,128)	30	17,043
Czech Republic	5,209	(239)	64	81			16	697
Denmark	578	152	37	33			2	
France	4,236,956	84,432	25,259	12,515	212,854	90,753	726	314,832
Germany	4,581,842	109,645	31,557	34,410	94,145	74,923	552	363,912
Greece	2,548	368	102	134			10	132
Greenland	2	(8,538)						
Hungary	282,823	21,047	8,179	10,295	153,463	38,810	1,341	332,594
Ireland	216,303	39,013	5,600	5,498	500,000	53,640	15	
Italy	37,762,414	1,393,508	322,720	436,117	8,363,728	4,310,366	20,935	13,195,823
Jersey	21,653	6,420			25,157	6,045		18,627
Malta								
Montenegro		(2,360)					3	37
Netherlands	1,309,514	248,997	4,846	2,502	20,509,761	16,557,875	62	31,111
Norway	1,694,202	516,329	(21,560)	4,290	28,273	647,080	417	4,717,581
Poland	2,385	753	131	146			6	292
Portugal		(3,281)					7	13,822
Romania	2,726	328	27	27			15	657
Slovakia	1,244	(281)	10	5			6	13
Slovenia	35,206	3,641	607	626	12,957	11,934	26	1,590
Spain	286,363	4,256	1,152	1,045	17,299	2,286	92	15,726
Sweden	2,351	425	91	92			1	367
Switzerland	763,619	17,719	3,091	3,876	94,713	18,773	80	86,965
Turkey	15,305	9,773	166	166	4	561	10	29,806
Ukraine	2,481	261		55	1,248	(563)	17	61
United Kingdom	27,175,734	193,668	100,841	112,323	5,200,773	3,861,911	985	2,068,589
AFRICA	13,205,134	4,042,822	3,077,171	2,942,945	410,372	2,067,776	9,999	27,871,236
Algeria	1,294,607	491,392	516,914	520,439	12	(45)	786	3,232,780
Angola	2,368,079	312,940	356,329	189,360			369	5,275,039
Congo	1,112,508	(147,769)	168,558	171,487	380,993	(295,581)	567	5,571,642
Democratic Republic of the Congo	4	131			793	(821)		
Egypt	3,440,382	1,537,711	270,093	271,249	2	1,348	2,866	6,410,266
Gabon	7,096	(37,587)			13,501	(49,744)	16	12,806
Ghana	135,915	(3,339)			12,548	(197,672)	248	1,575,574
Ivory Coast		(25,283)						

(€ thousand)

FULL YEAR 2017	Total revenues	Profit (loss) before Income tax	Income Tax Paid (on Cash Basis)	Income Tax Accrued - current year	Stated capital	Accumulated Earnings	Number of Employees (number)	Tangible Assets other than Cash and Cash Equivalents
Kenya	4	(5,180)					6	5
Libya	3,588,864	2,053,712	1,510,372	1,531,940			3,402	3,322,158
Morocco	2	(2,178)					1	1,262
Mozambique	5	(4,871)					44	
Nigeria	1,101,745	(123,533)	154,773	142,404	2,422	2,610,283	1,177	2,229,788
South Africa	7	(11,829)					3	53
Tunisia	155,916	8,505	100,132	116,066	101	8	514	239,863
ASIA AND OCEANIA	6,536,430	550,024	237,228	264,892	175,477	(172,473)	4,589	14,949,691
Australia	217,141	43,289	13,123	23,337	98,692	(97,399)	114	897,518
China	211,905	1,413	122	243	43,076	(50,017)	67	46,249
India	171	(460)		63	242	(227)	4	2,738
Indonesia	266,423	(39,249)	17,328	32,258			932	1,776,611
Iran	3,959	(3,410)		2,853			1	
Iraq	627,265	29,119	36,288	27,429			449	657,204
Kazakhstan	1,399,509	468,706	161,192	164,662			1,478	10,548,131
Myanmar	3	(14,182)					23	247
Pakistan	142,965	29,060	291	1,966			365	114,661
Russia	132,023	35,725	338	341	33,467	(24,830)	99	336,493
Saudi Arabia	21,033							
Singapore	3,395,541	11,570	79	(55)			19	79,322
Timor Leste	763	(365)					3	151
Turkmenistan	117,728	14,627	8,467	11,795			995	485,531
United Arab Emirates							9	
Vietnam	1	(25,819)					31	4,835
AMERICAS	5,391,157	(528,479)	26,354	84,430	6,127,795	(2,625,363)	1,354	3,547,823
Argentina		(620)			1,046	(304)		
Bahamas					2			
Bermuda	110	73			93,040	300,732		
Brazil		(11)			400,453	(400,468)		
British Virgin Islands					42	625,804		
Canada					2,211,922	(1,137,948)		
Cayman Islands								
Ecuador	236,837	52,181	27,514	53,553	191	30,935	782	267,916
Mexico		(24,544)				(24,857)	46	146,553
Trinidad and Tobago	18,551	27,803	2,978	2,878	20	25,915		65,048
United States	4,974,906	(368,171)	(4,138)	4,939	3,379,687	(2,056,573)	393	3,003,108
Venezuela	160,753	(215,190)		23,060	41,392	11,401	133	65,198
Eni Group	105,713,538	6,326,980	3,914,995	4,008,155	45,573,827	24,465,387	41,673	67,816,498

EUROPE

Italy	Total revenues	Profit (loss) before Income taxes*	Income Tax Paid (on Cash Basis)	Income Tax Accrued - current year	Stated capital	Accumulated Earnings	Number of Employees (number)	Tangible Assets other than Cash and Cash Equivalents
<small>(€ thousand)</small>								
Full year 2017	37,762,414	1,393,508	322,720	436,117	8,363,728	4,310,366	20,935	13,195,823
<i>Revenues - related party transaction</i>	<i>12,483,403</i>							
<i>Revenues - non-related party transaction</i>	<i>25,279,011</i>							
<u>Eni Group constituent entities included in the tax jurisdiction</u>			<u>Residence tax jurisdiction</u>	<u>Business activity</u>			<u>Eni business segment</u>	
Agencia Giornalistica Italia SpA				Administrative, Management or Support Services			Corporate and financial subsidiaries	
Anic Partecipazioni SpA (in liquidation)				Dormant			Other activities	
Consorzio AgipGas Sabina (in liquidation)				Sales, Marketing or Distribution			Refining & Marketing	
Consorzio Industriale Gas Naturale (in liquidation)				Dormant			Chemicals	
Costiero Gas Livorno SpA ⁽¹⁰⁾				Sales, Marketing or Distribution			Refining & Marketing	
Ecofuel SpA				Manufacturing or Production			Refining & Marketing	
Eni Adfin SpA				Regulated Financial Services			Corporate and financial subsidiaries	
Eni Angola SpA				Manufacturing or Production			Exploration & Production	
Eni Corporate University SpA				Administrative, Management or Support Services			Corporate and financial subsidiaries	
Eni Energia Srl				Research and Development			Corporate and financial subsidiaries	
Eni Fuel SpA				Sales, Marketing or Distribution			Refining & Marketing	
Eni Gas e Luce SpA				Sales, Marketing or Distribution			Gas & Power	
Eni Gas Transport Services Srl				Administrative, Management or Support Services			Gas & Power	
Eni Mediterranea Idrocarburi SpA				Manufacturing or Production			Exploration & Production	
Eni Mozambico SpA				Research and Development			Exploration & Production	
Eni New Energy SpA				Research and Development			Other activities	
Eni Progetti SpA				Administrative, Management or Support Services			Exploration & Production	
Eni SpA*				Manufacturing or Production; Sales, Marketing or Distribution; Administrative, Management or Support Services; Research and Development			Corporate and financial subsidiaries	
Eni Timor Leste SpA				Research and Development			Exploration & Production	
Eni Trading & Shipping SpA				Sales, Marketing or Distribution			Gas & Power	
Eni West Africa SpA				Research and Development			Exploration & Production	
eni Zubair SpA (in liquidation)				Dormant			Exploration & Production	
EniPower Mantova SpA				Manufacturing or Production			Gas & Power	
EniPower SpA				Manufacturing or Production			Gas & Power	
EniServizi SpA				Administrative, Management or Support Services			Corporate and financial subsidiaries	
Floaters SpA				Manufacturing or Production			Exploration & Production	
GreenStream BV - PE				Transportation activities (via pipeline)			Gas & Power	
Ieoc SpA				Manufacturing or Production			Exploration & Production	
Industria Siciliana Acido Fosforico - ISAF - SpA (in liquidation)				Manufacturing or Production			Other activities	
Ing. Luigi Conti Vecchi SpA				Manufacturing or Production			Other activities	
LNG Shipping SpA				Sales, Marketing or Distribution			Gas & Power	
Mozambique Rovuma Venture SpA ⁽¹⁰⁾				Research and Development			Exploration & Production	
Petroven Srl ⁽¹⁰⁾				Sales, Marketing or Distribution			Refining & Marketing	
Raffineria di Gela SpA				Manufacturing or Production			Refining & Marketing	
Raffineria di Milazzo ScpA ⁽¹⁰⁾				Manufacturing or Production			Refining & Marketing	
Serfactoring SpA				Regulated Financial Services			Corporate and financial subsidiaries	
Servizi Aerei SpA				Administrative, Management or Support Services			Corporate and financial subsidiaries	
Servizi Fondo Bolele Metano SpA				Provision of Services to Unrelated Parties			Gas & Power	
Società EniPower Ferrara Srl ⁽¹⁰⁾				Manufacturing or Production			Gas & Power	
Società Oleodotti Meridionali - SOM SpA ⁽¹⁰⁾				Sales, Marketing or Distribution			Exploration & Production	
Società Petrolifera Italiana SpA				Manufacturing or Production			Exploration & Production	
Syndial Servizi Ambientali SpA				Environmental remediation activity and waste management			Other activities	
Termica Milazzo Srl ⁽¹⁰⁾				Manufacturing or Production			Refining & Marketing	
Trans Tunisian Pipeline Co SpA				Transportation activities (via pipeline)			Gas & Power	
Versalis SpA				Manufacturing or Production			Chemicals	

(*) Net of dividends paid by subsidiary undertakings amounting to €3.06 billion.

Austria	Total revenues	Profit (loss) before Income tax	Income Tax Paid (on Cash Basis)	Income Tax Accrued - current year	Stated capital	Accumulated Earnings	Number of Employees (number)	Tangible Assets other than Cash and Cash Equivalents
(€ thousand)								
Full year 2017	1,097,130	52,110	4,421	5,213	132,278	66,844	122	127,904
<i>Revenues - related party transaction</i>	<i>333,674</i>							
<i>Revenues - non-related party transaction</i>	<i>763,456</i>							
<u>Eni Group constituent entities included in the tax jurisdiction</u>		<u>Residence tax jurisdiction</u>		<u>Business activity</u>				<u>Eni business segment</u>
Eni Austria GmbH				Sales, Marketing or Distribution				Refining & Marketing
Eni Marketing Austria GmbH				Sales, Marketing or Distribution				Refining & Marketing
Eni Mineralölhandel GmbH				Sales, Marketing or Distribution				Refining & Marketing
Eni SpA - PE		Italy		Sales, Marketing or Distribution				Corporate and financial subsidiaries
Versalis International SA - PE		Belgium		Sales, Marketing or Distribution				Chemicals

Belgium	Total revenues	Profit (loss) before Income tax	Income Tax Paid (on Cash Basis)	Income Tax Accrued - current year	Stated capital	Accumulated Earnings	Number of Employees (number)	Tangible Assets other than Cash and Cash Equivalents
(€ thousand)								
Full year 2017	1,055,250	(390,429)	86,901	86,439	2,975,525	(285,663)	223	2,651
<i>Revenues - related party transaction</i>	<i>732,025</i>							
<i>Revenues - non-related party transaction</i>	<i>323,225</i>							
<u>Eni Group constituent entities included in the tax jurisdiction</u>		<u>Residence tax jurisdiction</u>		<u>Business activity</u>				<u>Eni business segment</u>
Banque Eni SA				Regulated financial services				Corporate and financial subsidiaries
Eni Finance International SA				Internal Group Finance				Corporate and financial subsidiaries
Eni SpA - PE		Italy		Sales, Marketing or Distribution				Corporate and financial subsidiaries
Eni Trading & Shipping SpA - PE		Italy		Sales, Marketing or Distribution				Gas & Power
Eni Venezuela E&P Holding SA				Holding shares or Other Equity Instruments				Exploration & Production
Versalis International SA				Sales, Marketing or Distribution				Chemicals

Croatia	Total revenues	Profit (loss) before Income tax	Income Tax Paid (on Cash Basis)	Income Tax Accrued - current year	Stated capital	Accumulated Earnings	Number of Employees (number)	Tangible Assets other than Cash and Cash Equivalents
(€ thousand)								
Full year 2017	26,978	(11,215)					32	106,916
<i>Revenues - related party transaction</i>	<i>21,642</i>							
<i>Revenues - non-related party transaction</i>	<i>5,336</i>							
<u>Eni Group constituent entities included in the tax jurisdiction</u>		<u>Residence tax jurisdiction</u>		<u>Business activity</u>				<u>Eni business segment</u>
Eni Croatia BV - PE		Netherlands		Manufacturing or Production				Exploration & Production

Cyprus	Total revenues	Profit (loss) before Income tax	Income Tax Paid (on Cash Basis)	Income Tax Accrued - current year	Stated capital	Accumulated Earnings	Number of Employees (number)	Tangible Assets other than Cash and Cash Equivalents
(€ thousand)								
Full year 2017	1	(23,889)			538,005	(260,128)	30	17,043
<i>Revenues - related party transaction</i>	<i>1</i>							
<i>Revenues - non-related party transaction</i>								
<u>Eni Group constituent entities included in the tax jurisdiction</u>		<u>Residence tax jurisdiction</u>		<u>Business activity</u>				<u>Eni business segment</u>
Burren (Cyprus) Holdings Ltd (in liquidation)				Dormant				Exploration & Production
Burren Energy Ship Management Ltd (in liquidation)				Dormant				Exploration & Production
Eni Cyprus Ltd				Research and Development				Exploration & Production

Eni/Country-by-Country Report

Czech Republic	Total revenues	Profit (loss) before Income tax	Income Tax Paid (on Cash Basis)	Income Tax Accrued - current year	Stated capital	Accumulated Earnings	Number of Employees (number)	Tangible Assets other than Cash and Cash Equivalents
(€ thousand)								
Full year 2017	5,209	(239)	64	81			16	697
<i>Revenues - related party transaction</i>								
<i>Revenues - non-related party transaction</i>	<i>5,209</i>							
<u>Eni Group constituent entities included in the tax jurisdiction</u>			<u>Residence tax jurisdiction</u>	<u>Business activity</u>				<u>Eni business segment</u>
Eni Austria GmbH - PE			Austria	Sales, Marketing or Distribution				Refining & Marketing
Versalis International SA - PE			Belgium	Sales, Marketing or Distribution				Chemicals

Denmark	Total revenues	Profit (loss) before Income tax	Income Tax Paid (on Cash Basis)	Income Tax Accrued - current year	Stated capital	Accumulated Earnings	Number of Employees (number)	Tangible Assets other than Cash and Cash Equivalents
(€ thousand)								
Full year 2017	578	152	37	33			2	
<i>Revenues - related party transaction</i>	<i>578</i>							
<i>Revenues - non-related party transaction</i>								
<u>Eni Group constituent entities included in the tax jurisdiction</u>			<u>Residence tax jurisdiction</u>	<u>Business activity</u>				<u>Eni business segment</u>
Versalis International SA - PE			Belgium	Sales, Marketing or Distribution				Chemicals

France	Total revenues	Profit (loss) before Income tax	Income Tax Paid (on Cash Basis)	Income Tax Accrued - current year	Stated capital	Accumulated Earnings	Number of Employees (number)	Tangible Assets other than Cash and Cash Equivalents
(€ thousand)								
Full year 2017	4,236,956	84,432	25,259	12,515	212,854	90,753	726	314,832
<i>Revenues - related party transaction</i>	<i>959,605</i>							
<i>Revenues - non-related party transaction</i>	<i>3,277,351</i>							
<u>Eni Group constituent entities included in the tax jurisdiction</u>			<u>Residence tax jurisdiction</u>	<u>Business activity</u>				<u>Eni business segment</u>
Eni France Sàrl				Sales, Marketing or Distribution				Refining & Marketing
Eni Gas & Power France SA				Sales, Marketing or Distribution				Gas & Power
Eni SpA - PE			Italy	Sales, Marketing or Distribution				Corporate and financial subsidiaries
Versalis France SAS				Manufacturing or Production				Chemicals
Versalis International SA - PE			Belgium	Sales, Marketing or Distribution				Chemicals

Germany	Total revenues	Profit (loss) before Income tax	Income Tax Paid (on Cash Basis)	Income Tax Accrued - current year	Stated capital	Accumulated Earnings	Number of Employees (number)	Tangible Assets other than Cash and Cash Equivalents
(€ thousand)								
Full year 2017	4,581,842	109,645	31,557	34,410	94,145	74,923	552	363,912
<i>Revenues - related party transaction</i>	<i>460,452</i>							
<i>Revenues - non-related party transaction</i>	<i>4,121,390</i>							
<u>Eni Group constituent entities included in the tax jurisdiction</u>			<u>Residence tax jurisdiction</u>	<u>Business activity</u>				<u>Eni business segment</u>
Bayernoil Raffineriegesellschaft mbH ⁽¹⁰⁾				Manufacturing or Production				Refining & Marketing
Eni Deutschland GmbH				Sales, Marketing or Distribution				Refining & Marketing
Eni Schmiertechnik GmbH				Sales, Marketing or Distribution				Refining & Marketing
Eni SpA - PE			Italy	Sales, Marketing or Distribution				Corporate and financial subsidiaries
Versalis Deutschland GmbH				Manufacturing or Production				Chemicals
Versalis International SA - PE			Belgium	Sales, Marketing or Distribution				Chemicals

Greece	Total revenues	Profit (loss) before Income tax	Income Tax Paid (on Cash Basis)	Income Tax Accrued - current year	Stated capital	Accumulated Earnings	Number of Employees (number)	Tangible Assets other than Cash and Cash Equivalents
(€ thousand)								
Full year 2017	2,548	368	102	134			10	132
<i>Revenues - related party transaction</i>	<i>1,336</i>							
<i>Revenues - non-related party transaction</i>	<i>1,212</i>							

Eni Group constituent entities included in the tax jurisdiction
Versalis International SA - PE

Residence tax jurisdiction

Belgium

Business activity
Sales, Marketing or Distribution

Eni business segment
Chemicals

Greenland	Total revenues	Profit (loss) before Income tax	Income Tax Paid (on Cash Basis)	Income Tax Accrued - current year	Stated capital	Accumulated Earnings	Number of Employees (number)	Tangible Assets other than Cash and Cash Equivalents
(€ thousand)								
Full year 2017	2	(8,538)						
<i>Revenues - related party transaction</i>	<i>2</i>							
<i>Revenues - non-related party transaction</i>								

Eni Group constituent entities included in the tax jurisdiction
Eni Denmark BV - PE

Residence tax jurisdiction

Netherlands

Business activity
Research and Development

Eni business segment
Exploration & Production

Hungary	Total revenues	Profit (loss) before Income tax	Income Tax Paid (on Cash Basis)	Income Tax Accrued - current year	Stated capital	Accumulated Earnings	Number of Employees (number)	Tangible Assets other than Cash and Cash Equivalents
(€ thousand)								
Full year 2017	282,823	21,047	8,179	10,295	153,463	38,810	1,341	332,594
<i>Revenues - related party transaction</i>	<i>10,539</i>							
<i>Revenues - non-related party transaction</i>	<i>272,284</i>							

Eni Group constituent entities included in the tax jurisdiction
Dunastyr Polisztirolgyártó Zártkörűen Működő Részvénytársaság

Residence tax jurisdiction

Business activity

Eni business segment

Eni Austria GmbH - PE
Tigáz Tiszántúli Gázszolgáltató Zártkörűen Működő Részvénytársaság

Austria

Sales, Marketing or Distribution

Chemicals

Tigáz-Dso Földgázelosztó kft

Sales, Marketing or Distribution

Gas & Power

Versalis International SA - PE

Belgium

Sales, Marketing or Distribution

Chemicals

Ireland	Total revenues	Profit (loss) before Income tax	Income Tax Paid (on Cash Basis)	Income Tax Accrued - current year	Stated capital	Accumulated Earnings	Number of Employees (number)	Tangible Assets other than Cash and Cash Equivalents
(€ thousand)								
Full year 2017	216,303	39,013	5,600	5,498	500,000	53,640	15	
<i>Revenues - related party transaction</i>	<i>94,935</i>							
<i>Revenues - non-related party transaction</i>	<i>121,368</i>							

Eni Group constituent entities included in the tax jurisdiction
Eni Insurance Designated Activity Company

Residence tax jurisdiction

Business activity

Eni business segment

Eni Ireland BV - PE

Netherlands

Insurance
Research and Development

Corporate and financial subsidiaries
Exploration & Production

Jersey	Total revenues	Profit (loss) before Income tax	Income Tax Paid (on Cash Basis)	Income Tax Accrued - current year	Stated capital	Accumulated Earnings	Number of Employees (number)	Tangible Assets other than Cash and Cash Equivalents
(€ thousand)								
Full year 2017	21,653	6,420			25,157	6,045		18,627
<i>Revenues - related party transaction</i>	<i>21,653</i>							
<i>Revenues - non-related party transaction</i>								

Eni Group constituent entities included in the tax jurisdiction
Transmediterranean Pipeline Co Ltd* ⁽¹⁰⁾

Residence tax jurisdiction

Business activity
Transportation activities (via pipeline)

Eni business segment
Gas & Power

(*) Company resident in country or territory that can be classified low-tax jurisdiction; company is subject to taxation in Italy.

Eni/Country-by-Country Report

Malta	Total revenues	Profit (loss) before Income tax	Income Tax Paid (on Cash Basis)	Income Tax Accrued - current year	Stated capital	Accumulated Earnings	Number of Employees (number)	Tangible Assets other than Cash and Cash Equivalents
<i>(€ thousand)</i>								
Full year 2017								
<i>Revenues - related party transaction</i>								
<i>Revenues - non-related party transaction</i>								
<u>Eni Group constituent entities included in the tax jurisdiction</u>								
Eni North Africa BV - PE			Residence tax jurisdiction Netherlands	Business activity Manufacturing or Production				Eni business segment Exploration & Production
Montenegro	Total revenues	Profit (loss) before Income tax	Income Tax Paid (on Cash Basis)	Income Tax Accrued - current year	Stated capital	Accumulated Earnings	Number of Employees (number)	Tangible Assets other than Cash and Cash Equivalents
<i>(€ thousand)</i>								
Full year 2017		(2,360)					3	37
<i>Revenues - related party transaction</i>								
<i>Revenues - non-related party transaction</i>								
<u>Eni Group constituent entities included in the tax jurisdiction</u>								
Eni Montenegro BV - PE			Residence tax jurisdiction Netherlands	Business activity Research and Development				Eni business segment Exploration & Production
Netherlands	Total revenues	Profit (loss) before Income taxes*	Income Tax Paid (on Cash Basis)	Income Tax Accrued - current year	Stated capital	Accumulated Earnings	Number of Employees (number)	Tangible Assets other than Cash and Cash Equivalents
<i>(€ thousand)</i>								
Full year 2017	1,309,514	248,997	4,846	2,502	20,509,761	16,557,875	62	31,111
<i>Revenues - related party transaction</i>	1,252,001							
<i>Revenues - non-related party transaction</i>	57,513							
<u>Eni Group constituent entities included in the tax jurisdiction</u>								
			Residence tax jurisdiction	Business activity				Eni business segment
Agip Caspian Sea BV				Manufacturing or Production				Exploration & Production
Agip Karachaganak BV				Manufacturing or Production				Exploration & Production
Agip Oil Ecuador BV				Manufacturing or Production				Exploration & Production
Agip Oleoducto de Crudos Pesados BV				Holding Shares or Other Equity Instruments				Exploration & Production
Blue Stream Pipeline Co BV ⁽¹⁰⁾				Transportation activities (via pipeline)				Gas & Power
Eni Abu Dhabi BV				Manufacturing or Production				Exploration & Production
Eni Algeria Exploration BV				Manufacturing or Production				Exploration & Production
Eni Algeria Ltd Sàrl**				Manufacturing or Production				Exploration & Production
Eni Algeria Production BV				Manufacturing or Production				Exploration & Production
Eni Angola Exploration BV				Manufacturing or Production				Exploration & Production
Eni Angola Production BV				Manufacturing or Production				Exploration & Production
Eni Australia BV				Manufacturing or Production				Exploration & Production
Eni Benelux BV				Sales, Marketing or Distribution				Refining & Marketing
Eni Bulungan BV				Research and Development				Exploration & Production
Eni China BV				Manufacturing or Production				Exploration & Production
Eni Croatia BV				Manufacturing or Production				Exploration & Production
Eni Dación BV				Dormant				Exploration & Production
Eni Denmark BV				Research and Development				Exploration & Production
Eni Energy Russia BV				Holding Shares or Other Equity Instruments				Exploration & Production
Eni Exploration & Production Holding BV				Holding Shares or Other Equity Instruments				Exploration & Production
Eni G&P Trading BV				Sales, Marketing or Distribution				Gas & Power
Eni Gas & Power LNG Australia BV				Manufacturing or Production				Exploration & Production
Eni International BV*				Holding Shares or Other Equity Instruments				Corporate and financial subsidiaries
Eni Iran BV				Dormant				Exploration & Production
Eni Iraq BV				Manufacturing or Production				Exploration & Production
Eni Ireland BV				Research and Development				Exploration & Production
Eni Isatay BV				Research and Development				Exploration & Production
Eni JPDA 11-106 BV				Research and Development				Exploration & Production
Eni Kenya BV				Research and Development				Exploration & Production
Eni Lebanon BV				Research and Development				Exploration & Production
Eni Liberia BV				Research and Development				Exploration & Production
Eni Maroc BV				Research and Development				Exploration & Production
Eni Middle East BV				Holding Shares or Other Equity Instruments				Exploration & Production

Eni Montenegro BV	Research and Development	Exploration & Production
Eni Mozambique LNG Holding BV	Holding Shares or Other Equity Instruments	Exploration & Production
Eni Muara Bakau BV	Manufacturing or Production	Exploration & Production
Eni Myanmar BV	Research and Development	Exploration & Production
Eni North Africa BV	Manufacturing or Production	Exploration & Production
Eni Oil Holdings BV*	Holding Shares or Other Equity Instruments	Exploration & Production
Eni Oman BV	Research and Development	Exploration & Production
Eni Pakistan (M) Ltd Sàrl**	Manufacturing or Production	Exploration & Production
Eni Portugal BV	Research and Development	Exploration & Production
Eni Rovuma Basin BV	Research and Development	Exploration & Production
Eni South Africa BV	Research and Development	Exploration & Production
Eni South China Sea Ltd Sàrl**	Dormant	Exploration & Production
Eni Tunisia BV	Manufacturing or Production	Exploration & Production
Eni Ukraine Holdings BV	Holding Shares or Other Equity Instruments	Exploration & Production
Eni Ukraine Shallow Waters BV	Research and Development	Exploration & Production
Eni Venezuela BV	Manufacturing or Production	Exploration & Production
Eni Vietnam BV	Research and Development	Exploration & Production
GreenStream BV ⁽¹⁰⁾	Transportation activities (via pipeline)	Gas & Power
Ieoc Exploration BV	Manufacturing or Production	Exploration & Production
Ieoc Production BV	Manufacturing or Production	Exploration & Production

(*) Net of dividends paid by subsidiary undertakings amounting to €1.82 billion (of which €1.81 billion relating to Eni International BV). Dividends paid by non-controlling entities were included.

(**) Company resident in Luxembourg.

Norway	Total revenues	Profit (loss) before Income tax	Income Tax Paid (on Cash Basis)	Income Tax Accrued - current year	Stated capital	Accumulated Earnings	Number of Employees (number)	Tangible Assets other than Cash and Cash Equivalents
<small>(€ thousand)</small>								
Full year 2017	1,694,202	516,329	(21,560)	4,290	28,273	647,080	417	4,717,581
<i>Revenues - related party transaction</i>	<i>1,336,745</i>							
<i>Revenues - non-related party transaction</i>	<i>357,457</i>							
<u>Eni Group constituent entities included in the tax jurisdiction</u>								
Eni Norge AS			<u>Residence tax jurisdiction</u>	<u>Business activity</u>				<u>Eni business segment</u>
				Manufacturing or Production				Exploration & Production

Poland	Total revenues	Profit (loss) before Income tax	Income Tax Paid (on Cash Basis)	Income Tax Accrued - current year	Stated capital	Accumulated Earnings	Number of Employees (number)	Tangible Assets other than Cash and Cash Equivalents
<small>(€ thousand)</small>								
Full year 2017	2,385	753	131	146			6	292
<i>Revenues - related party transaction</i>	<i>1,260</i>							
<i>Revenues - non-related party transaction</i>	<i>1,125</i>							
<u>Eni Group constituent entities included in the tax jurisdiction</u>								
Versalis International SA - PE			<u>Residence tax jurisdiction</u>	<u>Business activity</u>				<u>Eni business segment</u>
			Belgium	Sales, Marketing or Distribution				Chemicals

Portugal	Total revenues	Profit (loss) before Income tax	Income Tax Paid (on Cash Basis)	Income Tax Accrued - current year	Stated capital	Accumulated Earnings	Number of Employees (number)	Tangible Assets other than Cash and Cash Equivalents
<small>(€ thousand)</small>								
Full year 2017		(3,281)					7	13,822
<i>Revenues - related party transaction</i>								
<i>Revenues - non-related party transaction</i>								
<u>Eni Group constituent entities included in the tax jurisdiction</u>								
Eni Portugal BV - PE			<u>Residence tax jurisdiction</u>	<u>Business activity</u>				<u>Eni business segment</u>
			Netherlands	Research and Development				Exploration & Production

Eni/Country-by-Country Report

Romania	Total revenues	Profit (loss) before Income tax	Income Tax Paid (on Cash Basis)	Income Tax Accrued - current year	Stated capital	Accumulated Earnings	Number of Employees (number)	Tangible Assets other than Cash and Cash Equivalents
(€ thousand)								
Full year 2017	2,726	328	27	27			15	657
<i>Revenues - related party transaction</i>	<i>602</i>							
<i>Revenues - non-related party transaction</i>	<i>2,124</i>							
<u>Eni Group constituent entities included in the tax jurisdiction</u>			<u>Residence tax jurisdiction</u>	<u>Business activity</u>				<u>Eni business segment</u>
Eni Austria GmbH - PE			Austria	Sales, Marketing or Distribution				Refining & Marketing
Versalis International SA - PE			Belgium	Sales, Marketing or Distribution				Chemicals

Slovakia	Total revenues	Profit (loss) before Income tax	Income Tax Paid (on Cash Basis)	Income Tax Accrued - current year	Stated capital	Accumulated Earnings	Number of Employees (number)	Tangible Assets other than Cash and Cash Equivalents
(€ thousand)								
Full year 2017	1,244	(281)	10	5			6	13
<i>Revenues - related party transaction</i>								
<i>Revenues - non-related party transaction</i>	<i>1,244</i>							
<u>Eni Group constituent entities included in the tax jurisdiction</u>			<u>Residence tax jurisdiction</u>	<u>Business activity</u>				<u>Eni business segment</u>
Eni Austria GmbH - PE			Austria	Sales, Marketing or Distribution				Refining & Marketing
Versalis International SA - PE			Belgium	Sales, Marketing or Distribution				Chemicals

Slovenia	Total revenues	Profit (loss) before Income tax	Income Tax Paid (on Cash Basis)	Income Tax Accrued - current year	Stated capital	Accumulated Earnings	Number of Employees (number)	Tangible Assets other than Cash and Cash Equivalents
(€ thousand)								
Full year 2017	35,206	3,641	607	626	12,957	11,934	26	1,590
<i>Revenues - related party transaction</i>	<i>115</i>							
<i>Revenues - non-related party transaction</i>	<i>35,091</i>							
<u>Eni Group constituent entities included in the tax jurisdiction</u>			<u>Residence tax jurisdiction</u>	<u>Business activity</u>				<u>Eni business segment</u>
Adriaplin Podjetje za distribucijo zemeljskega plina doo Ljubljana				Sales, Marketing or Distribution				Gas & Power

Spain	Total revenues	Profit (loss) before Income tax	Income Tax Paid (on Cash Basis)	Income Tax Accrued - current year	Stated capital	Accumulated Earnings	Number of Employees (number)	Tangible Assets other than Cash and Cash Equivalents
(€ thousand)								
Full year 2017	286,363	4,256	1,152	1,045	17,299	2,286	92	15,726
<i>Revenues - related party transaction</i>	<i>19,049</i>							
<i>Revenues - non-related party transaction</i>	<i>267,314</i>							
<u>Eni Group constituent entities included in the tax jurisdiction</u>			<u>Residence tax jurisdiction</u>	<u>Business activity</u>				<u>Eni business segment</u>
Eni Iberia SLU				Sales, Marketing or Distribution				Refining & Marketing
Versalis International SA - PE			Belgium	Sales, Marketing or Distribution				Chemicals

Sweden	Total revenues	Profit (loss) before Income tax	Income Tax Paid (on Cash Basis)	Income Tax Accrued - current year	Stated capital	Accumulated Earnings	Number of Employees (number)	Tangible Assets other than Cash and Cash Equivalents
(€ thousand)								
Full year 2017	2,351	425	91	92			1	367
<i>Revenues - related party transaction</i>	<i>501</i>							
<i>Revenues - non-related party transaction</i>	<i>1,850</i>							
<u>Eni Group constituent entities included in the tax jurisdiction</u>			<u>Residence tax jurisdiction</u>	<u>Business activity</u>				<u>Eni business segment</u>
Versalis International SA - PE			Belgium	Sales, Marketing or Distribution				Chemicals

Switzerland	Total revenues	Profit (loss) before Income tax	Income Tax Paid (on Cash Basis)	Income Tax Accrued - current year	Stated capital	Accumulated Earnings	Number of Employees (number)	Tangible Assets other than Cash and Cash Equivalents
<small>(€ thousand)</small>								
Full year 2017	763,619	17,719	3,091	3,876	94,713	18,773	80	86,965
<i>Revenues - related party transaction</i>	<i>21,549</i>							
<i>Revenues - non-related party transaction</i>	<i>742,070</i>							
<u>Eni Group constituent entities included in the tax jurisdiction</u>								
		<u>Residence tax jurisdiction</u>		<u>Business activity</u>				<u>Eni business segment</u>
Eni Suisse SA				Sales, Marketing or Distribution				Refining & Marketing
Oleodotto del Reno SA				Project study, construction and operation of pipelines				Other activities
Oléoduc du Rhône SA				Project study, construction and operation of pipelines				Refining & Marketing
Versalis International SA - PE		Belgium		Sales, Marketing or Distribution				Chemicals

Turkey	Total revenues	Profit (loss) before Income tax	Income Tax Paid (on Cash Basis)	Income Tax Accrued - current year	Stated capital	Accumulated Earnings	Number of Employees (number)	Tangible Assets other than Cash and Cash Equivalents
<small>(€ thousand)</small>								
Full year 2017	15,305	9,773	166	166	4	561	10	29,806
<i>Revenues - related party transaction</i>	<i>6,665</i>							
<i>Revenues - non-related party transaction</i>	<i>8,640</i>							
<u>Eni Group constituent entities included in the tax jurisdiction</u>								
		<u>Residence tax jurisdiction</u>		<u>Business activity</u>				<u>Eni business segment</u>
Blue Stream Pipeline Co BV - PE		Belgium		Transportation activities (via pipeline)				Gas & Power
Versalis Kimya Ticaret Limited Sirketi				Sales, Marketing or Distribution				Chemicals

Ukraine	Total revenues	Profit (loss) before Income tax	Income Tax Paid (on Cash Basis)	Income Tax Accrued - current year	Stated capital	Accumulated Earnings	Number of Employees (number)	Tangible Assets other than Cash and Cash Equivalents
<small>(€ thousand)</small>								
Full year 2017	2,481	261		55	1,248	(563)	17	61
<i>Revenues - related party transaction</i>								
<i>Revenues - non-related party transaction</i>	<i>2,481</i>							
<u>Eni Group constituent entities included in the tax jurisdiction</u>								
		<u>Residence tax jurisdiction</u>		<u>Business activity</u>				<u>Eni business segment</u>
Eni Ukraine Llc				Research and Development				Exploration & Production

United Kingdom	Total revenues	Profit (loss) before Income taxes*	Income Tax Paid (on Cash Basis)	Income Tax Accrued - current year	Stated capital	Accumulated Earnings	Number of Employees (number)	Tangible Assets other than Cash and Cash Equivalents
<small>(€ thousand)</small>								
Full year 2017	27,175,734	193,668	100,841	112,323	5,200,773	3,861,911	985	2,068,589
<i>Revenues - related party transaction</i>	<i>11,695,870</i>							
<i>Revenues - non-related party transaction</i>	<i>15,479,864</i>							
<u>Eni Group constituent entities included in the tax jurisdiction</u>								
		<u>Residence tax jurisdiction</u>		<u>Business activity</u>				<u>Eni business segment</u>
Burren Energy (Egypt) Ltd				Manufacturing or Production				Exploration & Production
Burren Energy India Ltd				Dormant				Exploration & Production
Burren Energy Plc				Holding Shares or Other Equity Instruments				Exploration & Production
Eni AEP Ltd				Manufacturing or Production				Exploration & Production
Eni Ambalat Ltd				Legal Owner of a Licence				Exploration & Production
Eni Arguni I Ltd				Legal Owner of a Licence				Exploration & Production
Eni Australia Ltd				Manufacturing or Production				Exploration & Production
Eni BTC Ltd				Holding Shares or Other Equity Instruments				Exploration & Production
Eni Bukat Ltd				Legal Owner of a Licence				Exploration & Production
Eni CBM Ltd				Manufacturing or Production				Exploration & Production
Eni Côte d'Ivoire Ltd				Research and Development				Exploration & Production
Eni East Sepinggan Ltd				Legal Owner of a Licence				Exploration & Production
Eni Elgin/Franklin Ltd				Manufacturing or Production				Exploration & Production
Eni Engineering E&P Ltd				Administrative, Management or Support Services				Exploration & Production
Eni Ganai Ltd				Legal Owner of a Licence				Exploration & Production
Eni Hewett Ltd				Manufacturing or Production				Exploration & Production
Eni Hydrocarbons Venezuela Ltd				Manufacturing or Production				Exploration & Production
Eni India Ltd				Research and Development				Exploration & Production

Eni/Country-by-Country Report

Eni Indonesia Ltd		Legal Owner of a Licence	Exploration & Production
Eni International NA NV Sàrl**		Holding Shares or Other Equity Instruments	Exploration & Production
Eni International Resources Ltd		Administrative, Management or Support Services	Corporate and financial subsidiaries
Eni Investments Plc		Holding Shares or Other Equity Instruments	Exploration & Production
Eni JPDA 03-13 Ltd		Manufacturing or Production	Exploration & Production
Eni Krueng Mane Ltd		Legal Owner of a Licence	Exploration & Production
Eni Lasmo Plc*		Holding Shares or Other Equity Instruments	Exploration & Production
Eni Liverpool Bay Operating Co Ltd		Manufacturing or Production	Exploration & Production
Eni LNS Ltd		Manufacturing or Production	Exploration & Production
Eni Middle East Ltd		Dormant	Exploration & Production
Eni MOG Ltd (in liquidation)		Dormant	Exploration & Production
Eni Mozambique Engineering Ltd		Administrative, Management or Support Services	Exploration & Production
Eni North Ganai Ltd		Legal Owner of a Licence	Exploration & Production
Eni Oil Algeria Ltd		Manufacturing or Production	Exploration & Production
Eni Pakistan Ltd		Manufacturing or Production	Exploration & Production
Eni Progetti SpA - PE	Italy	Administrative, Management or Support Services	Exploration & Production
Eni Rapak Ltd		Legal Owner of a Licence	Exploration & Production
Eni TNS Ltd		Dormant	Exploration & Production
Eni Trading & Shipping SpA - PE	Italy	Sales, Marketing or Distribution	Gas & Power
Eni UHL Ltd		Holding Shares or Other Equity Instruments	Exploration & Production
Eni UK Holding Plc		Holding Shares or Other Equity Instruments	Exploration & Production
Eni UK Ltd*		Manufacturing or Production	Exploration & Production
Eni UKCS Ltd		Manufacturing or Production	Exploration & Production
Eni ULT Ltd*		Holding Shares or Other Equity Instruments	Exploration & Production
Eni ULX Ltd*		Manufacturing or Production	Exploration & Production
Eni Ventures Plc (in liquidation)		Dormant	Exploration & Production
Eni West Timor Ltd		Holding Shares or Other Equity Instruments	Exploration & Production
Eni Yemen Ltd		Dormant	Exploration & Production
Lasmo Sanga Sanga Ltd***		Manufacturing or Production	Exploration & Production
Liverpool Bay Ltd		Manufacturing or Production	Exploration & Production
Versalis International SA - PE	Belgium	Sales, Marketing or Distribution	Chemicals
Versalis UK Ltd		Manufacturing or Production	Chemicals

(*) Net of dividends paid by subsidiary undertakings amounting to €0.94 billion.

(**) Company resident in Luxembourg.

(***) Company resident in Bermuda.

AFRICA

Algeria	Total revenues	Profit (loss) before Income tax	Income Tax Paid (on Cash Basis)	Income Tax Accrued - current year	Stated capital	Accumulated Earnings	Number of Employees (number)	Tangible Assets other than Cash and Cash Equivalents
(€ thousand)								
Full year 2017	1,294,607	491,392	516,914	520,439	12	(45)	786	3,232,780
<i>Revenues - related party transaction</i>	<i>636,938</i>							
<i>Revenues - non-related party transaction</i>	<i>657,669</i>							
<u>Eni Group constituent entities included in the tax jurisdiction</u>		<u>Residence tax jurisdiction</u>		<u>Business activity</u>				<u>Eni business segment</u>
Eni Algeria Exploration BV - PE		Netherlands		Manufacturing or Production				Exploration & Production
Eni Algeria Ltd Sàrl - PE		Netherlands		Manufacturing or Production				Exploration & Production
Eni Algeria Production BV - PE		Netherlands		Manufacturing or Production				Exploration & Production
Eni Oil Algeria Ltd - PE		United Kingdom		Manufacturing or Production				Exploration & Production
Eurl Eni Algérie				Dormant				Exploration & Production
First Calgary Petroleum LP - PE		Canada		Manufacturing or Production				Exploration & Production

Angola	Total revenues	Profit (loss) before Income tax	Income Tax Paid (on Cash Basis)	Income Tax Accrued - current year	Stated capital	Accumulated Earnings	Number of Employees (number)	Tangible Assets other than Cash and Cash Equivalents
(€ thousand)								
Full year 2017	2,368,079	312,940	356,329	189,360			369	5,275,039
<i>Revenues - related party transaction</i>	<i>2,240,799</i>							
<i>Revenues - non-related party transaction</i>	<i>127,280</i>							
<u>Eni Group constituent entities included in the tax jurisdiction</u>								
		<u>Residence tax jurisdiction</u>		<u>Business activity</u>				<u>Eni business segment</u>
Eni Angola Exploration BV - PE		Netherlands		Manufacturing or Production				Exploration & Production
Eni Angola Production BV - PE		Netherlands		Manufacturing or Production				Exploration & Production
Eni Angola SpA - PE		Italy		Manufacturing or Production				Exploration & Production
Eni West Africa SpA - PE		Italy		Research and Development				Exploration & Production

Congo	Total revenues	Profit (loss) before Income tax	Income Tax Paid (on Cash Basis)	Income Tax Accrued - current year	Stated capital	Accumulated Earnings	Number of Employees (number)	Tangible Assets other than Cash and Cash Equivalents
(€ thousand)								
Full year 2017	1,112,508	(147,769)	168,558	171,487	380,993	(295,581)	567	5,571,642
<i>Revenues - related party transaction</i>	<i>958,938</i>							
<i>Revenues - non-related party transaction</i>	<i>153,570</i>							
<u>Eni Group constituent entities included in the tax jurisdiction</u>								
		<u>Residence tax jurisdiction</u>		<u>Business activity</u>				<u>Eni business segment</u>
Burren Energy Congo Ltd - PE		British Virgin Islands		Manufacturing or Production				Exploration & Production
Eni Congo SA				Manufacturing or Production				Exploration & Production
Versalis Congo Sarlu				Sales, Marketing or Distribution				Chemicals

Democratic Republic of the Congo	Total revenues	Profit (loss) before Income tax	Income Tax Paid (on Cash Basis)	Income Tax Accrued - current year	Stated capital	Accumulated Earnings	Number of Employees (number)	Tangible Assets other than Cash and Cash Equivalents
(€ thousand)								
Full year 2017	4	131			793	(821)		
<i>Revenues - related party transaction</i>	<i>4</i>							
<i>Revenues - non-related party transaction</i>								
<u>Eni Group constituent entities included in the tax jurisdiction</u>								
		<u>Residence tax jurisdiction</u>		<u>Business activity</u>				<u>Eni business segment</u>
Eni RD Congo SA				Research and Development				Exploration & Production

Egypt	Total revenues	Profit (loss) before Income tax	Income Tax Paid (on Cash Basis)	Income Tax Accrued - current year	Stated capital	Accumulated Earnings	Number of Employees (number)	Tangible Assets other than Cash and Cash Equivalents
(€ thousand)								
Full year 2017	3,440,382	1,537,711	270,093	271,249	2	1,348	2,866	6,410,266
<i>Revenues - related party transaction</i>	<i>5,761</i>							
<i>Revenues - non-related party transaction</i>	<i>3,434,621</i>							
<u>Eni Group constituent entities included in the tax jurisdiction</u>								
		<u>Residence tax jurisdiction</u>		<u>Business activity</u>				<u>Eni business segment</u>
Burren Energy (Egypt) Ltd - PE		United Kingdom		Manufacturing or Production				Exploration & Production
Eni New Energy Egypt SAE				Research and Development				Other activities
Ieoc Exploration BV - PE		Netherlands		Manufacturing or Production				Exploration & Production
Ieoc Production BV - PE		Netherlands		Manufacturing or Production				Exploration & Production
Ieoc SpA - PE		Italy		Manufacturing or Production				Exploration & Production
EniProgetti Egypt Ltd				Administrative, Management or Support Services				Exploration & Production

Gabon	Total revenues	Profit (loss) before Income tax	Income Tax Paid (on Cash Basis)	Income Tax Accrued - current year	Stated capital	Accumulated Earnings	Number of Employees (number)	Tangible Assets other than Cash and Cash Equivalents
(€ thousand)								
Full year 2017	7,096	(37,587)			13,501	(49,744)	16	12,806
<i>Revenues - related party transaction</i>	<i>7,096</i>							
<i>Revenues - non-related party transaction</i>								
<u>Eni Group constituent entities included in the tax jurisdiction</u>								
		<u>Residence tax jurisdiction</u>		<u>Business activity</u>				<u>Eni business segment</u>
Eni Gabon SA				Research and Development				Exploration & Production

Eni/Country-by-Country Report

Ghana	Total revenues	Profit (loss) before Income tax	Income Tax Paid (on Cash Basis)	Income Tax Accrued - current year	Stated capital	Accumulated Earnings	Number of Employees (number)	Tangible Assets other than Cash and Cash Equivalents
(€ thousand)								
Full year 2017	135,915	(3,339)			12,548	(197,672)	248	1,575,574
<i>Revenues - related party transaction</i>	<i>134,766</i>							
<i>Revenues - non-related party transaction</i>	<i>1,149</i>							
<u>Eni Group constituent entities included in the tax jurisdiction</u>		<u>Residence tax jurisdiction</u>		<u>Business activity</u>				<u>Eni business segment</u>
Eni Ghana Exploration and Production Ltd				Manufacturing or Production				Exploration & Production

Ivory Coast	Total revenues	Profit (loss) before Income tax	Income Tax Paid (on Cash Basis)	Income Tax Accrued - current year	Stated capital	Accumulated Earnings	Number of Employees (number)	Tangible Assets other than Cash and Cash Equivalents
(€ thousand)								
Full year 2017		(25,283)						
<i>Revenues - related party transaction</i>								
<i>Revenues - non-related party transaction</i>								
<u>Eni Group constituent entities included in the tax jurisdiction</u>		<u>Residence tax jurisdiction</u>		<u>Business activity</u>				<u>Eni business segment</u>
Eni Côte d'Ivoire Ltd - PE		United Kingdom		Research and Development				Exploration & Production

Kenya	Total revenues	Profit (loss) before Income tax	Income Tax Paid (on Cash Basis)	Income Tax Accrued - current year	Stated capital	Accumulated Earnings	Number of Employees (number)	Tangible Assets other than Cash and Cash Equivalents
(€ thousand)								
Full year 2017	4	(5,180)					6	5
<i>Revenues - related party transaction</i>	<i>4</i>							
<i>Revenues - non-related party transaction</i>								
<u>Eni Group constituent entities included in the tax jurisdiction</u>		<u>Residence tax jurisdiction</u>		<u>Business activity</u>				<u>Eni business segment</u>
Eni Kenya BV - PE		Netherlands		Research and Development				Exploration & Production

Libya	Total revenues	Profit (loss) before Income tax	Income Tax Paid (on Cash Basis)	Income Tax Accrued - current year	Stated capital	Accumulated Earnings	Number of Employees (number)	Tangible Assets other than Cash and Cash Equivalents
(€ thousand)								
Full year 2017	3,588,864	2,053,712	1,510,372	1,531,940			3,402	3,322,158
<i>Revenues - related party transaction</i>	<i>339,023</i>							
<i>Revenues - non-related party transaction</i>	<i>3,249,841</i>							
<u>Eni Group constituent entities included in the tax jurisdiction</u>		<u>Residence tax jurisdiction</u>		<u>Business activity</u>				<u>Eni business segment</u>
Eni North Africa BV - PE		Netherlands		Manufacturing or Production				Exploration & Production
GreenStream BV - PE		Netherlands		Transportation activities (via pipeline)				Gas & Power

Morocco	Total revenues	Profit (loss) before Income tax	Income Tax Paid (on Cash Basis)	Income Tax Accrued - current year	Stated capital	Accumulated Earnings	Number of Employees (number)	Tangible Assets other than Cash and Cash Equivalents
(€ thousand)								
Full year 2017	2	(2,178)					1	1,262
<i>Revenues - related party transaction</i>	<i>2</i>							
<i>Revenues - non-related party transaction</i>								
<u>Eni Group constituent entities included in the tax jurisdiction</u>		<u>Residence tax jurisdiction</u>		<u>Business activity</u>				<u>Eni business segment</u>
Eni Maroc BV - PE		Netherlands		Research and Development				Exploration & Production

Mozambique	Total revenues	Profit (loss) before Income tax	Income Tax Paid (on Cash Basis)	Income Tax Accrued - current year	Stated capital	Accumulated Earnings	Number of Employees (number)	Tangible Assets other than Cash and Cash Equivalents
(€ thousand)								
Full year 2017	5	(4,871)					44	
<i>Revenues - related party transaction</i>								
<i>Revenues - non-related party transaction</i>	<i>5</i>							
<u>Eni Group constituent entities included in the tax jurisdiction</u>		<u>Residence tax jurisdiction</u>		<u>Business activity</u>				<u>Eni business segment</u>
Eni Mozambico SpA - PE		Italy		Research and Development				Exploration & Production
Mozambique Rovuma Venture SpA - PE		Italy		Research and Development				Exploration & Production

Nigeria	Total revenues	Profit (loss) before Income tax	Income Tax Paid (on Cash Basis)	Income Tax Accrued - current year	Stated capital	Accumulated Earnings	Number of Employees (number)	Tangible Assets other than Cash and Cash Equivalents
<small>(€ thousand)</small>								
Full year 2017	1,101,745	(123,533)	154,773	142,404	2,422	2,610,283	1,177	2,229,788
<i>Revenues - related party transaction</i>	<i>818,065</i>							
<i>Revenues - non-related party transaction</i>	<i>283,680</i>							
<u>Eni Group constituent entities included in the tax jurisdiction</u>								
		<u>Residence tax jurisdiction</u>		<u>Business activity</u>				<u>Eni business segment</u>
Agip Energy and Natural Resources (Nigeria) Ltd				Manufacturing or Production				Exploration & Production
Nigerian Agip CPFA Ltd				Administrative, Management or Support Services				Exploration & Production
Nigerian Agip Exploration Ltd				Manufacturing or Production				Exploration & Production
Nigerian Agip Oil Co Ltd				Manufacturing or Production				Exploration & Production

South Africa	Total revenues	Profit (loss) before Income tax	Income Tax Paid (on Cash Basis)	Income Tax Accrued - current year	Stated capital	Accumulated Earnings	Number of Employees (number)	Tangible Assets other than Cash and Cash Equivalents
<small>(€ thousand)</small>								
Full year 2017	7	(11,829)					3	53
<i>Revenues - related party transaction</i>	<i>1</i>							
<i>Revenues - non-related party transaction</i>	<i>6</i>							
<u>Eni Group constituent entities included in the tax jurisdiction</u>								
		<u>Residence tax jurisdiction</u>		<u>Business activity</u>				<u>Eni business segment</u>
Eni South Africa BV - PE		Netherlands		Research and Development				Exploration & Production

Tunisia	Total revenues	Profit (loss) before Income tax	Income Tax Paid (on Cash Basis)	Income Tax Accrued - current year	Stated capital	Accumulated Earnings	Number of Employees (number)	Tangible Assets other than Cash and Cash Equivalents
<small>(€ thousand)</small>								
Full year 2017	155,916	8,505	100,132	116,066	101	8	514	239,863
<i>Revenues - related party transaction</i>	<i>71,807</i>							
<i>Revenues - non-related party transaction</i>	<i>84,109</i>							
<u>Eni Group constituent entities included in the tax jurisdiction</u>								
		<u>Residence tax jurisdiction</u>		<u>Business activity</u>				<u>Eni business segment</u>
Eni Tunisia BV - PE		Netherlands		Manufacturing or Production				Exploration & Production
Société de Service du Gazoduc Transtunisien SA - Sergaz SA				Transportation activities (via pipeline)				Gas & Power
Société pour la Construction du Gazoduc Transtunisien SA - Scogat SA				Transportation activities (via pipeline)				Gas & Power
Trans Tunisian Pipeline Co SpA - PE		Italy		Transportation activities (via pipeline)				Gas & Power

ASIA AND OCEANIA

Australia	Total revenues	Profit (loss) before Income tax	Income Tax Paid (on Cash Basis)	Income Tax Accrued - current year	Stated capital	Accumulated Earnings	Number of Employees (number)	Tangible Assets other than Cash and Cash Equivalents
<small>(€ thousand)</small>								
Full year 2017	217,141	43,289	13,123	23,337	98,692	(97,399)	114	897,518
<i>Revenues - related party transaction</i>	<i>26,579</i>							
<i>Revenues - non-related party transaction</i>	<i>190,562</i>							
<u>Eni Group constituent entities included in the tax jurisdiction</u>								
		<u>Residence tax jurisdiction</u>		<u>Business activity</u>				<u>Eni business segment</u>
Eni Australia BV - PE		Netherlands		Manufacturing or Production				Exploration & Production
Eni Australia Ltd - PE		United Kingdom		Manufacturing or Production				Exploration & Production
Eni Gas & Power LNG Australia BV - PE		Netherlands		Manufacturing or Production				Exploration & Production
Eni JPDA 03-13 Ltd - PE		United Kingdom		Manufacturing or Production				Exploration & Production
Eni JPDA 06-105 Pty Ltd				Manufacturing or Production				Exploration & Production
Eni JPDA 11-106 BV - PE		Netherlands		Research and Development				Exploration & Production

Eni/Country-by-Country Report

China	Total revenues	Profit (loss) before Income tax	Income Tax Paid (on Cash Basis)	Income Tax Accrued - current year	Stated capital	Accumulated Earnings	Number of Employees (number)	Tangible Assets other than Cash and Cash Equivalents
(€ thousand)								
Full year 2017	211,905	1,413	122	243	43,076	(50,017)	67	46,249
<i>Revenues - related party transaction</i>	<i>7,803</i>							
<i>Revenues - non-related party transaction</i>	<i>204,102</i>							
<u>Eni Group constituent entities included in the tax jurisdiction</u>		<u>Residence tax jurisdiction</u>		<u>Business activity</u>				<u>Eni business segment</u>
Eni Chemicals Trading (Shanghai) Co Ltd (in liquidation)				Sales, Marketing or Distribution				Chemicals
Eni China BV - PE		Netherlands		Manufacturing or Production				Exploration & Production
Eni Lubricants Trading (Shanghai) Co Ltd				Sales, Marketing or Distribution				Refining & Marketing
Versalis Pacific Trading (Shanghai) Co Ltd				Sales, Marketing or Distribution				Chemicals
India	Total revenues	Profit (loss) before Income tax	Income Tax Paid (on Cash Basis)	Income Tax Accrued - current year	Stated capital	Accumulated Earnings	Number of Employees (number)	Tangible Assets other than Cash and Cash Equivalents
(€ thousand)								
Full year 2017	171	(460)		63	242	(227)	4	2,738
<i>Revenues - related party transaction</i>	<i>171</i>							
<i>Revenues - non-related party transaction</i>								
<u>Eni Group constituent entities included in the tax jurisdiction</u>		<u>Residence tax jurisdiction</u>		<u>Business activity</u>				<u>Eni business segment</u>
Eni India Ltd - PE		United Kingdom		Research and Development				Exploration & Production
Versalis Pacific (India) Private Ltd				Sales, Marketing or Distribution				Chemicals
Indonesia	Total revenues	Profit (loss) before Income tax	Income Tax Paid (on Cash Basis)	Income Tax Accrued - current year	Stated capital	Accumulated Earnings	Number of Employees (number)	Tangible Assets other than Cash and Cash Equivalents
(€ thousand)								
Full year 2017	266,423	(39,249)	17,328	32,258			932	1,776,611
<i>Revenues - related party transaction</i>	<i>152,439</i>							
<i>Revenues - non-related party transaction</i>	<i>113,984</i>							
<u>Eni Group constituent entities included in the tax jurisdiction</u>		<u>Residence tax jurisdiction</u>		<u>Business activity</u>				<u>Eni business segment</u>
Eni Ambalat Ltd - PE		United Kingdom		Legal Owner of a Licence				Exploration & Production
Eni Arguni I Ltd - PE		United Kingdom		Legal Owner of a Licence				Exploration & Production
Eni Bukat Ltd - PE		United Kingdom		Legal Owner of a Licence				Exploration & Production
Eni Bulungan BV - PE		Netherlands		Research and Development				Exploration & Production
Eni CBM Ltd - PE		United Kingdom		Manufacturing or Production				Exploration & Production
Eni East Sepinggan Ltd - PE		United Kingdom		Legal Owner of a Licence				Exploration & Production
Eni Ganal Ltd - PE		United Kingdom		Legal Owner of a Licence				Exploration & Production
Eni Indonesia Ltd - PE		United Kingdom		Legal Owner of a Licence				Exploration & Production
Eni Indonesia Ots 1 Ltd - PE		Cayman Islands		Legal Owner of a Licence				Exploration & Production
Eni Krueng Mane Ltd - PE		United Kingdom		Legal Owner of a Licence				Exploration & Production
Eni Muara Bakau BV - PE		Netherlands		Manufacturing or Production				Exploration & Production
Eni North Ganal Ltd - PE		United Kingdom		Legal Owner of a Licence				Exploration & Production
Eni Rapak Ltd - PE		United Kingdom		Legal Owner of a Licence				Exploration & Production
Eni West Timor Ltd - PE		United Kingdom		Legal Owner of a Licence				Exploration & Production
Lasmo Sanga Sanga Ltd - PE		United Kingdom		Manufacturing or Production				Exploration & Production
Iran	Total revenues	Profit (loss) before Income tax	Income Tax Paid (on Cash Basis)	Income Tax Accrued - current year	Stated capital	Accumulated Earnings	Number of Employees (number)	Tangible Assets other than Cash and Cash Equivalents
(€ thousand)								
Full year 2017	3,959	(3,410)		2,853			1	
<i>Revenues - related party transaction</i>	<i>413</i>							
<i>Revenues - non-related party transaction</i>	<i>3,546</i>							
<u>Eni Group constituent entities included in the tax jurisdiction</u>		<u>Residence tax jurisdiction</u>		<u>Business activity</u>				<u>Eni business segment</u>
Eni Iran BV - PE		Netherlands		Dormant				Exploration & Production

Iraq	Total revenues	Profit (loss) before Income tax	Income Tax Paid (on Cash Basis)	Income Tax Accrued - current year	Stated capital	Accumulated Earnings	Number of Employees (number)	Tangible Assets other than Cash and Cash Equivalents
<small>(€ thousand)</small>								
Full year 2017	627,265	29,119	36,288	27,429			449	657,204
<i>Revenues - related party transaction</i>	<i>627,265</i>							
<i>Revenues - non-related party transaction</i>								
<u>Eni Group constituent entities included in the tax jurisdiction</u>								
		<u>Residence tax jurisdiction</u>		<u>Business activity</u>				<u>Eni business segment</u>
Eni Iraq BV - PE		Netherlands		Manufacturing or Production				Exploration & Production

Kazakhstan	Total revenues	Profit (loss) before Income tax	Income Tax Paid (on Cash Basis)	Income Tax Accrued - current year	Stated capital	Accumulated Earnings	Number of Employees (number)	Tangible Assets other than Cash and Cash Equivalents
<small>(€ thousand)</small>								
Full year 2017	1,399,509	468,706	161,192	164,662			1,478	10,548,131
<i>Revenues - related party transaction</i>	<i>684,009</i>							
<i>Revenues - non-related party transaction</i>	<i>715,500</i>							
<u>Eni Group constituent entities included in the tax jurisdiction</u>								
		<u>Residence tax jurisdiction</u>		<u>Business activity</u>				<u>Eni business segment</u>
Agip Caspian Sea BV - PE		Netherlands		Manufacturing or Production				Exploration & Production
Agip Karachaganak BV - PE		Netherlands		Manufacturing or Production				Exploration & Production
Eni Isatay BV - PE		Netherlands		Research and Development				Exploration & Production
Eni Progetti SpA - PE		Italy		Administrative, Management or Support Services				Exploration & Production

Myanmar	Total revenues	Profit (loss) before Income tax	Income Tax Paid (on Cash Basis)	Income Tax Accrued - current year	Stated capital	Accumulated Earnings	Number of Employees (number)	Tangible Assets other than Cash and Cash Equivalents
<small>(€ thousand)</small>								
Full year 2017	3	(14,182)					23	247
<i>Revenues - related party transaction</i>	<i>3</i>							
<i>Revenues - non-related party transaction</i>								
<u>Eni Group constituent entities included in the tax jurisdiction</u>								
		<u>Residence tax jurisdiction</u>		<u>Business activity</u>				<u>Eni business segment</u>
Eni Myanmar BV - PE		Netherlands		Research and Development				Exploration & Production

Pakistan	Total revenues	Profit (loss) before Income tax	Income Tax Paid (on Cash Basis)	Income Tax Accrued - current year	Stated capital	Accumulated Earnings	Number of Employees (number)	Tangible Assets other than Cash and Cash Equivalents
<small>(€ thousand)</small>								
Full year 2017	142,965	29,060	291	1,966			365	114,661
<i>Revenues - related party transaction</i>	<i>18,452</i>							
<i>Revenues - non-related party transaction</i>	<i>124,513</i>							
<u>Eni Group constituent entities included in the tax jurisdiction</u>								
		<u>Residence tax jurisdiction</u>		<u>Business activity</u>				<u>Eni business segment</u>
Eni AEP Ltd - PE		United Kingdom		Manufacturing or Production				Exploration & Production
Eni Pakistan (M) Ltd Sàrl - PE		Netherlands		Manufacturing or Production				Exploration & Production
Eni Pakistan Ltd - PE		United Kingdom		Manufacturing or Production				Exploration & Production

Russia	Total revenues	Profit (loss) before Income tax	Income Tax Paid (on Cash Basis)	Income Tax Accrued - current year	Stated capital	Accumulated Earnings	Number of Employees (number)	Tangible Assets other than Cash and Cash Equivalents
<small>(€ thousand)</small>								
Full year 2017	132,023	35,725	338	341	33,467	(24,830)	99	336,493
<i>Revenues - related party transaction</i>	<i>45,158</i>							
<i>Revenues - non-related party transaction</i>	<i>86,865</i>							
<u>Eni Group constituent entities included in the tax jurisdiction</u>								
		<u>Residence tax jurisdiction</u>		<u>Business activity</u>				<u>Eni business segment</u>
Blue Stream Pipeline Co BV - PE		Netherlands		Transportation activities (via pipeline)				Gas & Power
OOO "Eni Energhia"				Research and Development				Exploration & Production
OOO "Eni-Nefto"				Sales, Marketing or Distribution				Refining & Marketing
Versalis International SA - PE		Belgium		Sales, Marketing or Distribution				Chemicals

Eni/Country-by-Country Report

Saudi Arabia	Total revenues	Profit (loss) before Income tax	Income Tax Paid (on Cash Basis)	Income Tax Accrued - current year	Stated capital	Accumulated Earnings	Number of Employees (number)	Tangible Assets other than Cash and Cash Equivalents
---------------------	----------------	---------------------------------	---------------------------------	-----------------------------------	----------------	----------------------	------------------------------	--

(€ thousand)

Full year 2017	21,033							
<i>Revenues - related party transaction</i>								
<i>Revenues - non-related party transaction</i>	21,033							

Eni Group constituent entities included in the tax jurisdiction

	Residence tax jurisdiction	Business activity	Eni business segment
Ecofuel SpA - PE	Italy	Manufacturing or Production	Refining & Marketing

Singapore	Total revenues	Profit (loss) before Income tax	Income Tax Paid (on Cash Basis)	Income Tax Accrued - current year	Stated capital	Accumulated Earnings	Number of Employees (number)	Tangible Assets other than Cash and Cash Equivalents
------------------	----------------	---------------------------------	---------------------------------	-----------------------------------	----------------	----------------------	------------------------------	--

(€ thousand)

Full year 2017	3,395,541	11,570	79	(55)			19	79,322
<i>Revenues - related party transaction</i>	38,020							
<i>Revenues - non-related party transaction</i>	3,357,521							

Eni Group constituent entities included in the tax jurisdiction

	Residence tax jurisdiction	Business activity	Eni business segment
Eni Trading & Shipping SpA - PE	Italy	Sales, Marketing or Distribution	Gas & Power
Versalis Singapore Pte Ltd		Sales, Marketing or Distribution	Chemicals

Timor Leste	Total revenues	Profit (loss) before Income tax	Income Tax Paid (on Cash Basis)	Income Tax Accrued - current year	Stated capital	Accumulated Earnings	Number of Employees (number)	Tangible Assets other than Cash and Cash Equivalents
--------------------	----------------	---------------------------------	---------------------------------	-----------------------------------	----------------	----------------------	------------------------------	--

(€ thousand)

Full year 2017	763	(365)					3	151
<i>Revenues - related party transaction</i>	293							
<i>Revenues - non-related party transaction</i>	470							

Eni Group constituent entities included in the tax jurisdiction

	Residence tax jurisdiction	Business activity	Eni business segment
Eni Timor Leste SpA - PE	Italy	Research and Development	Exploration & Production
Eni JPDA 03-13 Ltd - PE	United Kingdom	Manufacturing or Production	Exploration & Production

Turkmenistan	Total revenues	Profit (loss) before Income tax	Income Tax Paid (on Cash Basis)	Income Tax Accrued - current year	Stated capital	Accumulated Earnings	Number of Employees (number)	Tangible Assets other than Cash and Cash Equivalents
---------------------	----------------	---------------------------------	---------------------------------	-----------------------------------	----------------	----------------------	------------------------------	--

(€ thousand)

Full year 2017	117,728	14,627	8,467	11,795			995	485,531
<i>Revenues - related party transaction</i>	3,707							
<i>Revenues - non-related party transaction</i>	114,021							

Eni Group constituent entities included in the tax jurisdiction

	Residence tax jurisdiction	Business activity	Eni business segment
Eni Turkmenistan Ltd - PE	Bermuda	Manufacturing or Production	Exploration & Production

United Arab Emirates	Total revenues	Profit (loss) before Income tax	Income Tax Paid (on Cash Basis)	Income Tax Accrued - current year	Stated capital	Accumulated Earnings	Number of Employees (number)	Tangible Assets other than Cash and Cash Equivalents
-----------------------------	----------------	---------------------------------	---------------------------------	-----------------------------------	----------------	----------------------	------------------------------	--

(€ thousand)

Full year 2017							9	
<i>Revenues - related party transaction</i>								
<i>Revenues - non-related party transaction</i>								

Eni Group constituent entities included in the tax jurisdiction

	Residence tax jurisdiction	Business activity	Eni business segment
Eni Iraq BV - PE*	Netherlands	Manufacturing or Production	Exploration & Production

(*) PE resident in country or territory that can be classified low-tax jurisdiction; company is subject to taxation in Italy.

Vietnam	Total revenues	Profit (loss) before Income tax	Income Tax Paid (on Cash Basis)	Income Tax Accrued - current year	Stated capital	Accumulated Earnings	Number of Employees (number)	Tangible Assets other than Cash and Cash Equivalents
(€ thousand)								
Full year 2017	1	(25,819)					31	4,835
<i>Revenues - related party transaction</i>	<i>1</i>							
<i>Revenues - non-related party transaction</i>								
<u>Eni Group constituent entities included in the tax jurisdiction</u>			<u>Residence tax jurisdiction</u>	<u>Business activity</u>			<u>Eni business segment</u>	
Eni Vietnam BV - PE			Netherlands	Research and Development			Exploration & Production	

AMERICAS

Argentina	Total revenues	Profit (loss) before Income tax	Income Tax Paid (on Cash Basis)	Income Tax Accrued - current year	Stated capital	Accumulated Earnings	Number of Employees (number)	Tangible Assets other than Cash and Cash Equivalents
(€ thousand)								
Full year 2017		(620)			1,046	(304)		
<i>Revenues - related party transaction</i>								
<i>Revenues - non-related party transaction</i>								
<u>Eni Group constituent entities included in the tax jurisdiction</u>			<u>Residence tax jurisdiction</u>	<u>Business activity</u>			<u>Eni business segment</u>	
Eni Argentina Exploración y Explotación SA				Research and Development			Exploration & Production	

Bahamas	Total revenues	Profit (loss) before Income tax	Income Tax Paid (on Cash Basis)	Income Tax Accrued - current year	Stated capital	Accumulated Earnings	Number of Employees (number)	Tangible Assets other than Cash and Cash Equivalents
(€ thousand)								
Full year 2017					2			
<i>Revenues - related party transaction</i>								
<i>Revenues - non-related party transaction</i>								
<u>Eni Group constituent entities included in the tax jurisdiction</u>			<u>Residence tax jurisdiction</u>	<u>Business activity</u>			<u>Eni business segment</u>	
Zetah Congo Ltd*				Legal Owner of a Licence			Exploration & Production	
Zetah Kouilou Ltd*				Legal Owner of a Licence			Exploration & Production	

(*) Company resident in country or territory that can be classified low-tax jurisdiction; company is subject to taxation in Italy. In 2017 the company not accrued income.

Bermuda	Total revenues	Profit (loss) before Income tax	Income Tax Paid (on Cash Basis)	Income Tax Accrued - current year	Stated capital	Accumulated Earnings	Number of Employees (number)	Tangible Assets other than Cash and Cash Equivalents
(€ thousand)								
Full year 2017	110	73			93,040	300,732		
<i>Revenues - related party transaction</i>	<i>110</i>							
<i>Revenues - non-related party transaction</i>								
<u>Eni Group constituent entities included in the tax jurisdiction</u>			<u>Residence tax jurisdiction</u>	<u>Business activity</u>			<u>Eni business segment</u>	
Burren Energy (Bermuda) Ltd*				Holding Shares or Other Equity Instruments			Exploration & Production	
Burren Shakti Ltd**				Dormant			Exploration & Production	
Eni Turkmenistan Ltd***				Manufacturing or Production			Exploration & Production	

(*) Holding company resident in country or territory that can be classified low-tax jurisdiction. In 2017 the company accrued income lower than €100,000.

(**) Holding company resident in country or territory that can be classified low-tax jurisdiction; company is subject to taxation in Italy. In 2017 the company accrued income lower than €100,000.

(***) Company resident in country or territory that can be classified low-tax jurisdiction; company is subject to taxation in country where conduct exploration, field development and extraction of hydrocarbons through a permanent establishment (PE). There is no profit shifting.

Eni/Country-by-Country Report

Brazil	Total revenues	Profit (loss) before Income tax	Income Tax Paid (on Cash Basis)	Income Tax Accrued - current year	Stated capital	Accumulated Earnings	Number of Employees (number)	Tangible Assets other than Cash and Cash Equivalents
(€ thousand)								
Full year 2017		(11)			400,453	(400,468)		
<i>Revenues - related party transaction</i>								
<i>Revenues - non-related party transaction</i>								
<u>Eni Group constituent entities included in the tax jurisdiction</u>			<u>Residence tax jurisdiction</u>	<u>Business activity</u>			<u>Eni business segment</u>	
Eni do Brasil Investimentos em Exploração e Produção de Petróleo Ltda				Research and Development			Exploration & Production	

British Virgin Islands	Total revenues	Profit (loss) before Income tax	Income Tax Paid (on Cash Basis)	Income Tax Accrued - current year	Stated capital	Accumulated Earnings	Number of Employees (number)	Tangible Assets other than Cash and Cash Equivalents
(€ thousand)								
Full year 2017					42	625,804		
<i>Revenues - related party transaction</i>								
<i>Revenues - non-related party transaction</i>								
<u>Eni Group constituent entities included in the tax jurisdiction</u>			<u>Residence tax jurisdiction</u>	<u>Business activity</u>			<u>Eni business segment</u>	
Burren Energy Congo Ltd*				Manufacturing or Production			Exploration & Production	

(*) Company resident in country or territory that can be classified low-tax jurisdiction; company is subject to taxation in country where conduct exploration, field development and extraction of hydrocarbons through a permanent establishment (PE). There is no profit shifting.

Canada	Total revenues	Profit (loss) before Income tax	Income Tax Paid (on Cash Basis)	Income Tax Accrued - current year	Stated capital	Accumulated Earnings	Number of Employees (number)	Tangible Assets other than Cash and Cash Equivalents
(€ thousand)								
Full year 2017					2,211,922	(1,137,948)		
<i>Revenues - related party transaction</i>								
<i>Revenues - non-related party transaction</i>								
<u>Eni Group constituent entities included in the tax jurisdiction</u>			<u>Residence tax jurisdiction</u>	<u>Business activity</u>			<u>Eni business segment</u>	
Eni Canada Holding Ltd				Holding Shares or Other Equity Instruments			Exploration & Production	
First Calgary Petroleum LP*				Manufacturing or Production			Exploration & Production	
First Calgary Petroleum Partner Co ULC				Holding Shares or Other Equity Instruments			Exploration & Production	

(*) Company resident in the United States.

Cayman Islands	Total revenues	Profit (loss) before Income tax	Income Tax Paid (on Cash Basis)	Income Tax Accrued - current year	Stated capital	Accumulated Earnings	Number of Employees (number)	Tangible Assets other than Cash and Cash Equivalents
(€ thousand)								
Full year 2017								
<i>Revenues - related party transaction</i>								
<i>Revenues - non-related party transaction</i>								
<u>Eni Group constituent entities included in the tax jurisdiction</u>			<u>Residence tax jurisdiction</u>	<u>Business activity</u>			<u>Eni business segment</u>	
Eni Indonesia Ots 1 Ltd*				Legal Owner of a Licence			Exploration & Production	

(*) Company resident in country or territory that can be classified low-tax jurisdiction; company is subject to taxation in Italy. In 2017 the company not accrued income.

Ecuador	Total revenues	Profit (loss) before Income tax	Income Tax Paid (on Cash Basis)	Income Tax Accrued - current year	Stated capital	Accumulated Earnings	Number of Employees (number)	Tangible Assets other than Cash and Cash Equivalents
(€ thousand)								
Full year 2017	236,837	52,181	27,514	53,553	191	30,935	782	267,916
<i>Revenues - related party transaction</i>	<i>105,825</i>							
<i>Revenues - non-related party transaction</i>	<i>131,012</i>							
<u>Eni Group constituent entities included in the tax jurisdiction</u>			<u>Residence tax jurisdiction</u>	<u>Business activity</u>			<u>Eni business segment</u>	
Agip Oil Ecuador BV - PE			Netherlands	Manufacturing or Production			Exploration & Production	
Eni Ecuador SA				Sales, Marketing or Distribution			Refining & Marketing	
Esacontrol SA				Manufacturing or Production			Refining & Marketing	
Esain SA				Sales, Marketing or Distribution			Refining & Marketing	
Tecnoesa SA				Manufacturing or Production			Refining & Marketing	

Mexico	Total revenues	Profit (loss) before Income tax	Income Tax Paid (on Cash Basis)	Income Tax Accrued - current year	Stated capital	Accumulated Earnings	Number of Employees (number)	Tangible Assets other than Cash and Cash Equivalents
(€ thousand)								
Full year 2017		(24,544)				(24,857)	46	146,553
<i>Revenues - related party transaction</i>								
<i>Revenues - non-related party transaction</i>								
<u>Eni Group constituent entities included in the tax jurisdiction</u>			<u>Residence tax jurisdiction</u>	<u>Business activity</u>				<u>Eni business segment</u>
Eni México S. de RL de CV				Research and Development				Exploration & Production

Trinidad and Tobago	Total revenues	Profit (loss) before Income tax	Income Tax Paid (on Cash Basis)	Income Tax Accrued - current year	Stated capital	Accumulated Earnings	Number of Employees (number)	Tangible Assets other than Cash and Cash Equivalents
(€ thousand)								
Full year 2017	18,551	27,803	2,978	2,878	20	25,915		65,048
<i>Revenues - related party transaction</i>	<i>111</i>							
<i>Revenues - non-related party transaction</i>	<i>18,440</i>							
<u>Eni Group constituent entities included in the tax jurisdiction</u>			<u>Residence tax jurisdiction</u>	<u>Business activity</u>				<u>Eni business segment</u>
Eni Trinidad and Tobago Ltd				Manufacturing or Production				Exploration & Production

United States	Total revenues	Profit (loss) before Income tax	Income Tax Paid (on Cash Basis)	Income Tax Accrued - current year	Stated capital	Accumulated Earnings	Number of Employees (number)	Tangible Assets other than Cash and Cash Equivalents
(€ thousand)								
Full year 2017	4,974,906	(368,171)	(4,138)	4,939	3,379,687	(2,056,573)	393	3,003,108
<i>Revenues - related party transaction</i>	<i>4,617,125</i>							
<i>Revenues - non-related party transaction</i>	<i>357,781</i>							
<u>Eni Group constituent entities included in the tax jurisdiction</u>			<u>Residence tax jurisdiction</u>	<u>Business activity</u>				<u>Eni business segment</u>
Eni America Ltd				Holding Shares or Other Equity Instruments				Exploration & Production
Eni BB Petroleum Inc				Manufacturing or Production				Exploration & Production
Eni Finance USA Inc				Internal Group Finance				Corporate and financial subsidiaries
Eni Marketing Inc				Sales, Marketing or Distribution				Exploration & Production
Eni Oil & Gas Inc				Manufacturing or Production				Exploration & Production
Eni Petroleum Co Inc				Manufacturing or Production				Exploration & Production
Eni Petroleum US Llc				Manufacturing or Production				Exploration & Production
Eni Trading & Shipping Inc				Sales, Marketing or Distribution				Gas & Power
Eni US Operating Co Inc				Manufacturing or Production				Exploration & Production
Eni USA Gas Marketing Llc				Sales, Marketing or Distribution				Exploration & Production
Eni USA Inc				Manufacturing or Production				Exploration & Production
Eni USA R&M Co Inc				Sales, Marketing or Distribution				Refining & Marketing
Versalis Americas Inc				Sales, Marketing or Distribution				Chemicals

Venezuela	Total revenues	Profit (loss) before Income tax	Income Tax Paid (on Cash Basis)	Income Tax Accrued - current year	Stated capital	Accumulated Earnings	Number of Employees (number)	Tangible Assets other than Cash and Cash Equivalents
(€ thousand)								
Full year 2017	160,753	(215,190)		23,060	41,392	11,401	133	65,198
<i>Revenues - related party transaction</i>	<i>160,881</i>							
<i>Revenues - non-related party transaction</i>	<i>(128)</i>							
<u>Eni Group constituent entities included in the tax jurisdiction</u>			<u>Residence tax jurisdiction</u>	<u>Business activity</u>				<u>Eni business segment</u>
Ecofuel SpA - PE			Italy	Manufacturing or Production				Refining & Marketing
Eni Hydrocarbons Venezuela Ltd - PE			United Kingdom	Research and Development				Exploration & Production
Eni Venezuela BV - PE			Netherlands	Holding Shares or Other Equity Instruments				Exploration & Production
Supermetanol CA ⁽¹⁰⁾				Manufacturing or Production				Refining & Marketing

Eni SpA

Headquarters

Piazzale Enrico Mattei, 1 - Rome - Italy

Capital Stock as of December 31, 2017: € 4,005,358,876.00 fully paid

Tax identification number 00484960588

Branches

Via Emilia, 1 - San Donato Milanese (Milan) - Italy

Piazza Ezio Vanoni, 1 - San Donato Milanese (Milan) - Italy

Publications

Financial Statement pursuant to rule 154-ter paragraph 1 of Legislative Decree No. 58/1998

Integrated Annual Report

Annual Report on Form 20-F for the Securities and Exchange Commission

Fact Book (in Italian and English)

Interim Consolidated Report as of June 30 pursuant to rule 154-ter paragraph 2 of Legislative Decree No. 58/1998

Corporate Governance Report pursuant to rule 123-bis of Legislative Decree No. 58/1998 (in Italian and English)

Remuneration Report pursuant to rule 123-ter of Legislative Decree No. 58/1998 (in Italian and English)

Eni in 2017 - Summary Annual Review (in English)

Eni For 2017 - Sustainability Report (in Italian and English)

Internet home page

www.eni.com

Rome office telephone

+39-0659821

Toll-free number

800940924

e-mail

segreteria.societaria.azionisti@eni.com

Investor Relations

Piazza Ezio Vanoni, 1 - 20097 San Donato Milanese (Milan)

Tel. +39-0252051651 - Fax +39-0252031929

e-mail: investor.relations@eni.com

Layout and supervision

K-Change - Rome

Printing

Varigrafica Alto Lazio - Viterbo - Italy

