

Parking Reminder

The system is designed to help locate a parked vehicle.

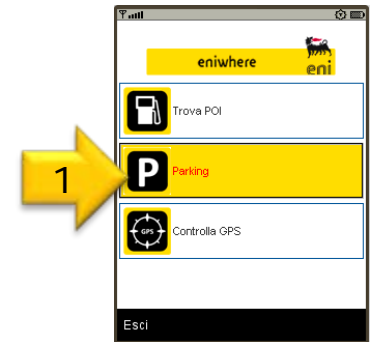
Operation of the system depends on the availability of a GPS signal in the parking area.

- **active GPS signal:** the user activates the service which memorises the vehicle's GPS coordinates. On returning to the parking area, the application then provides (textually and visually) directions to the parked vehicle.
- **no GPS signal:** the user inputs the location where the vehicle is parked. On returning, the application then provides (textually and visually) directions to the parked vehicle.



Parking Reminder – How it works

1. The application can be used to remind the user where he has parked his vehicle. Access for this function is made by selecting the Parking section from the Main Menu.
2. It is possible to save the position where a vehicle has been parked or ask the application to find a saved position.
3. If available. The GPS signal can be used to record where a vehicle is parked. Alternatively, this information can be provided manually. Subsequently it is necessary to memorise the position by pressing the "Save" button.



Parking Reminder – How it works

4. To find a parked vehicle, select “Find vehicle”.

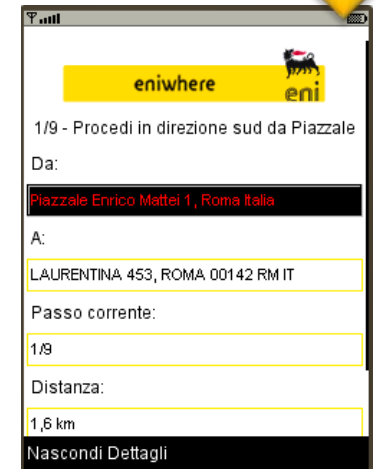


5. The point of departure must be provided before indications can be provided to find a parked vehicle. If available, the GPS signal may be used. Alternatively the point of departure may be input manually. It will subsequently be necessary to search for the last parking position saved by pressing “Find”.



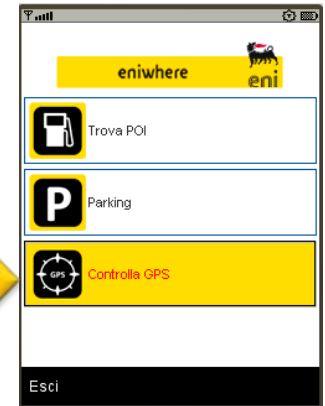
Parking Reminder – How it works

- To find a parked vehicle, follow the indications provided by the application. By using the “+” and “-” buttons on the right it is possible to see more or less detail on the map in the centre of the screen. The buttons at the top can be used to proceed to the next turning or to go back and see the previous turning.
- By clicking on the Menu and “Trip Details” it is possible to get additional information. For more details on the next step of the trip, press “Step”.



GPS support

- The application can make use of an external GPS with a Bluetooth connection.
- The external GPS system must be matched with the application through “GPS control” in the Main Menu.
- Check GPS status or search using Bluetooth to complete the match.
- The external GPS systems must be matched with the users' mobile in line with the manufacturers' indications.
- Access to external GPS systems are provided by Bluetooth API JSR 82. The technical specifications on the users' mobile should be checked.



Installation

- Download from browser to mobile.
 - Use the mobile phone browser to access the eni mobile portal and download the application. To install, follow the on-screen instructions.
- Installation from a PC
 - Use the PC browser to access the eni mobile portal and download the application.
 - To install use the methods or specific programs supplied by the manufacturer (e.g. for Nokia mobiles the Nokia PC Suite should be used).

